



TO SUIT IVECO S-WAY

Aerodynamics and Accessories

Iveco S-Way

Aerodynamics and Accessories



Microwave to Iveco S-Way High Roof (AS) Cab



Option Code - TRUCKCHEFIVSWAY

The industries leading 24v microwave oven, with its huge 20 litre capacity, powerful 800w cooking output and tailored fitting kits for almost every heavy truck - TruckChef is the perfect companion for any Truck Driver.

SIZE; WIDTH 450MM, HEIGHT 260MM, DEPTH 380MM

Fitting Time
2 Hours



Iveco S-Way High Roof (AS) Cab, Roller Shutter, Rear Lockers



Option Code - 115IVSWAY

Made from high quality, textured GRP and produced in a colour matched interior finish, combined with our brand new shutter door system these lockers have a superb build quality and secure fit.

Fitting Time
2 Hours



Iveco S-Way 6x2 Chassis TreadSafe Safety Platform/Catwalk, Highly Visible Full Chassis Catwalk



Option Code - SAFECATIVSWAY

By creating a new sub-frame which raises the catwalk to a level platform we are able to create a large, safe, anti-slip and anti-rust working area behind the cab.

Fitting Time
1 Hour



Iveco S-Way (6x2) Main Chassis Catwalk In-Fill



Option Code - CATIVEWAYINFILL

This catwalk system works alongside the manufacturers original catwalk sections giving you more workspace on the chassis. We are able to create further work space safely on the back of the cab, filling it with this extra section of catwalk.

Supplied with all fixings

Fitting Time
1 Hour



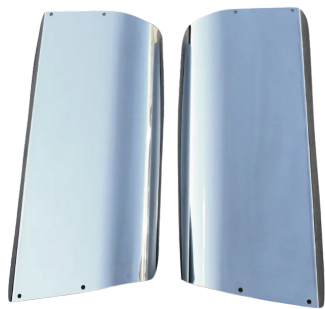
Iveco S-Way/X-Way MirrorShield - Super Strong Mirror Guard/Protector (Pair)



Option Code - MS026

MirrorShield is a super tough mirror guard, designed and engineered from the ground up to provide maximum protection to your mirrors, whilst maintaining both a lightweight construction and sleek aerodynamic design. Supplied as standard in 3 colours.

Fitting Time
1 Hour



Iveco S-Way Stainless Steel Mirror Guards

Option Code - SSMIR038

Stainless Steel Mirror Guards to suit Iveco S-Way
Set of 2
Easy to fit, all fittings supplied

Fitting Time
1 Hour



Iveco S-Way 6x2c, 4m Wheelbase Side Skirts

Option Code - 105IVSW6X2

GRP Side Skirts designed to suit the Iveco S-Way 6x2c chassis with a 4m wheelbase. Supplied in Iveco White as standard, however can also be supplied in any solid RAL colour for a small charge. The near side skirt now has an additional vent for cooling.

Supplied as a pair with all fixing brackets included.

Fitting Time
2 Hours

Run Up Ramp to suit Iveco S-Way 6x2 and 4x2

Option Code - RUNUPIVS

Powder Coated steel run up ramp to suit all Iveco S-Way 6x2 and 4x2 Chassis including Chassis Bolt Kit. Powder coated in chassis grey. Ramps supplied on their own, to suit existing chassis mounting plates, a perfect direct replacement for damage or wear and tear.

Fitting Time
30 Minutes

Indel B 24v Rear Mounted Truck Cab Cooler, Air Conditioner.

Option Code - TCBACK

Our rear mounted Indel B truck cab cooler. Introducing our new and exclusive Indel B range of cab coolers. With premium cooling output and fitting kits available for almost every make of truck they are a true market leader at a great price!

indelB

Fitting Time
5 Hours

6 Cup Coffee Maker 24v, 0.65ltr - 300 Watt

Option Code - COFFEE9119

New Generation with sleek new design! For discerning coffee lovers who like things to be both useful and beautiful, the Coffee Maker is ideal for the perfect breakfast in the morning or a nice cup of coffee in the afternoon.



Fitting Time
Supply Only

Iveco S-Way

Aerodynamics and Accessories



Iveco S-Way Smoke Sun Visor (Kit)

Option Code - 20305234

Made from high quality 3mm acrylic you can be sure this visor will be extremely secure on your vehicle. Our sun visors are manufactured in Europe to the highest degree of accuracy and follow a strict quality control process, ensuring the product you receive is nothing other than the best.

VPRO

Fitting Time

1 Hour

VPRO

Iveco S-Way 2019 Onwards, Side Window Deflectors

Option Code - 40208540

Side window deflectors suitable for Iveco S-Way 2019 Onwards. Eliminates fog and ventilates smoke while keeping out rain. Easy to fit design. Made from high quality 3mm cast acrylic. Mounted with stainless steel clips to the door.



Fitting Time

1 Hour

**PRO
TOUGH**

ProTough Seat Covers to suit Iveco S-Way (Pair)

Option Code - PT5257

ProTough, Super hard wearing seat covers are the only option when it comes to professional grade protection for your seats and interior. The double stitched construction and tough material make them your ultimate friend against dirt and grime in your cab.



Fitting Time

30 Minutes

Iveco S-Way

Aerodynamics and Accessories



LightFix Iveco S-Way Active Space High Roof Liner

Option Code - A27748-9

Stainless steel lightbar for mounting a maximum of 4 worklights and 2 beacons on the roof spoiler – including 5 red LEDs built into the lightbar. Tube diameter 70mm – mounted on the roof spoiler – drilling not necessary!



Multiple Finish Options



Fitting Time

2 Hours



LightFix Iveco S-Way Active Space High Roof Liner

Option Code - A27705-6

Stainless steel lightbar (set) for mounting a maximum of 2 spotlights and 2 beacons. Tube diameter 70mm – mounted under the sunvisor brackets – drilling not necessary!



Multiple Finish Options



Fitting Time

2 Hours



LightFix Iveco S-Way Active Space Front Liner "N"

Option Code - A27740-2

Stainless steel lightbar – including 5 white LEDs and 4 amber LEDs on the side. Tube diameter 60mm – mounted under the bumper – drilling not necessary!



Multiple Finish Options



Fitting Time

2 Hours



LightFix Iveco S-Way Active Space High Sky Light "Max"

Option Code - A27705-5

Stainless steel lightbar for mounting a maximum of 6 spotlights and 2 beacons. Tube diameter 70mm – mounted under the sunvisor brackets and in existing hole patterns – in the basic version with 8 amber LED's on the side and 2 red LED's in the tube ends.



Multiple Finish Options



Fitting Time

2 Hours



LightFix Iveco S-Way Active Space High Cab Liner

Option Code - A27748-2

Stainless steel LED lightbar – 2-parts set for driver and passenger side – including 16 red LEDs, 2 of them mounted in the tube ends. Tube diameter 60mm – mounted in existing hole patterns – drilling not necessary – foldable with the wind deflector.



Multiple Finish Options



Fitting Time

2 Hours

Iveco S-Way

Aerodynamics and Accessories



LightFix Iveco S-Way Active Space Front Protect "Big Nordic" Stainless Steel - Polished

Option Code - A22760-2-P

Stainless steel front protection bar - incl. black guard net made of ABS - 2 LAZER Triple-R 1000 spotlights - aerodynamically recessed in the tube - can be mounted on request. Tube diameter 70mm - mounted on stable fixing points.



Fitting Time

2 Hours



LightFix Iveco S-Way Active Space Front Liner "Targa"

Option Code - A27741-1

Stainless steel LED-lightbar - including 5 white LEDs and a stainless skid plate. Tube diameter 60mm - mounted under the bumper - drilling not necessary!



Multiple Finish Options



Fitting Time

2 Hours



LightFix Iveco S-Way Active Space High Sky Light "Slim"

Option Code - A27705-2

Stainless steel lightbar - including 5 white LEDs and 4 amber LEDs on the side. Tube diameter 60mm - mounted under the bumper - drilling not necessary! Stainless steel lightbar for mounting spotlights. Tube diameter 70mm - mounted under the sunvisor brackets - drilling not necessary!



Multiple Finish Options



Fitting Time

2 Hours

Iveco S-Way

Aerodynamics and Accessories



Hadley 37.5" Round Airhorn. H00868ECE. Air Horn.

Option Code - 80500019

Top Quality Hadley Airhorn with support arm

HADLEY

Multiple Finish Options



Stainless Steel Black Powder Coated

Fitting Time

2 Hours

HADLEY



Hadley 19" Round Airhorn. H00856ECE. Air Horn.

Option Code - 80500017

Top Quality Hadley Airhorn with support arm

Multiple Finish Options



Stainless Steel Black Powder Coated

Fitting Time

2 Hours

HADLEY



Hadley 22" Round Airhorn. H00855ECE. Air Horn.

Option Code - 80500016

Top Quality Hadley Airhorn with support arm

Multiple Finish Options



Stainless Steel Black Powder Coated

Fitting Time

2 Hours

HADLEY



Hadley 26" Rectangle Airhorn. H00978ECE. Air Horn.

Option Code - 80500021

Top Quality Hadley Airhorn with support arm

Fitting Time

2 Hours



Hadley 29" Rectangle Airhorn. H00977ECE. Air Horn.

Option Code - 80500023

Top Quality Hadley Airhorn with support arm

HADLEY

Fitting Time

2 Hours



UltraLEDs Utah Full LED Oval Spotlight, White/Amber DRL

Option Code - ULEDUTAH

The style that the UltraLEDs Utah spotlight gives your vehicle with its dual white and amber position light, full ultra-bright LED beam and sleek design will make you melt!

Fitting Time
2 Hours



800mm UltraLEDs Horizon Low Profile LED Beacon lightbar, Reg65, ECE Approved

Option Code - ULED800

The newest generation in beacon lightbars has landed from UltraLEDs. Horizon brings you the latest in LED technology, packaged into an ultra slim, super sleek chassis that's just 20mm thin!

Fitting Time
2 Hours



1000mm UltraLEDs Horizon Low Profile LED Beacon lightbar, Reg65, ECE Approved

Option Code - ULED1000

The newest generation in beacon lightbars has landed from UltraLEDs. Horizon brings you the latest in LED technology, packaged into an ultra slim, super sleek chassis that's just 20mm thin!

Fitting Time
2 Hours



1200mm UltraLEDs Horizon Low Profile LED Beacon lightbar, Reg65, ECE Approved

Option Code - ULED1200

The newest generation in beacon lightbars has landed from UltraLEDs. Horizon brings you the latest in LED technology, packaged into an ultra slim, super sleek chassis that's just 20mm thin!

Fitting Time
2 Hours



2 Head LED Strobe/Warning Light, Amber, 12/24v

Option Code - ULEDSTB2

Power: 18W 6pcs 3W SMD LEDs - Dimensions: 100 x 28.5 x 11.9mm - Voltage: 10-30V DC - Flash Pattern: 12 flash modes

Fitting Time
1 Hour



4 Head LED Strobe/Warning Light, Amber, 12/24v

Option Code - ULEDSTB4

Power: 36W 12pcs 3W SMD LEDs - Dimensions: 100 x 28.5 x 11.9mm - Voltage: 10-30V DC - Flash Pattern: 19 Flash Modes



Fitting Time

1 Hour



DubbelBrander Amber Lens, Amber Indicator Light, Full LED

Option Code - 46350274-LED

Double Brander / Dubble Burner Full LED Indicator Light. Complete with bulb holder



Fitting Time

1 Hour



DubbelBrander Clear Lens, Amber White Light, Full LED

Option Code - 46350273-LED

Double Brander / Dubble Burner Full LED Indicator Light. Complete with bulb holder



Fitting Time

1 Hour



LUXMOV – Smart TV, 21.5" Full HD LED 12/24v – Perfect for Trucks, Vans, RV's, ECE Reg 10

LUXMOV

Option Code – TV215HD

From LUXMOV, this 21.5" Smart TV is the perfect companion for on the road. It's fully ECE reg 10 type approved, making it one of the only TV's on the market that can be installed prior to registration in a vehicle.

Fitting Time
1 Hour

Iveco S-Way Front LED Sign/Nameboard



Option Code – IVE25140

SlimLED Nameboard to suit Iveco – 25x140cm. Front sign LED is a thin, elegant and extremely effective lighted sign, designed with maximum output. With its 8mm thin sheet, Front Sign LED is among the thinnest in the trucking market.



Fitting Time
2 Hours

Iveco S-Way Front LED Sign/Nameboard – 22.5 x 135cm



Option Code – IVE23135

SlimLED Nameboard to suit Iveco – 22,5 x135cm. Front sign LED is a thin, elegant and extremely effective lighted sign, designed with maximum output. With its 8mm thin sheet, Front Sign LED is among the thinnest in the trucking market.



Fitting Time
2 Hours

Fire and Hazchem Bundle



Option Code - HAZKIT

- 1 x 9Kg Fire Extinguisher Box and Bracket
- 1 x 9Kg Fire Extinguisher
- 1 x 3Kg Fire Extinguisher
- 1 x 400 x 300mm Galvanised Hazchem Plate

Fitting Time
1 Hour

LIFE-HAMMER

LifeHammer Safety Hammer Plus with EFS (Orange)



Option Code - HPNOEFSBU

With Easy Fix System: With this system you can mount the safety hammer on the middle console. Rotate the small click-adaptor for optimal positioning. It is possible to use the easy fix system in combination with the pro adapter. No screws are required to mount this system.

Fitting Time
5 Minutes



Universal, X-Block Wheel Chock Kit with chassis bracket

Option Code - XBL-KIT

This super quick to fit, folding HGV wheel chock kit is a must have for any haulier, fleet or workshop. The kit comes with a pair of the revolutionary X-Block wheel chocks, our universal chassis mount bracket, R-Clip and Bolt kit. Ready for you to fit!

XBlock

Fitting Time
5 Minutes

BriteAngle

BriteAngle LED Road Safety Warning Triangle



Option Code - BRITEANGLE

Be safe and seen with this High Intensity LED Warning Triangle from BriteAngle. Quick and Easy to deploy and super effective at the roadside.

Fitting Time
5 Minutes

Iveco S-Way

Aerodynamics and Accessories



Fresnel Lens

Option Code - FRESNEL

Make it easy to monitor the vehicles blind spot



ADR Kit - Complete in Tool Box

Option Code - KUD76

Rubber boots, gasmask, ABEK1-Filter, LED Torch, eye wash liquid, set of overalls, set of chemical gloves, set of protective glasses, security vest, covering carpet for oil spills and plastic shovel



30L Oil and Chemical Spill Kit

Option Code - KUD77

20 pads, 3 socks, dammit slab, disposable bag and tie, gloves and goggles



Truck and Van First Aid Kit - Travel Kit

Option Code - KUD79

From St. Johns Ambulance and designed specifically for truck and van drivers, this kit comes in an easy to store soft green pouch with all you need for any roadside first aid emergency.



Easy Grip "C" Coupling Handle (Pair)

Option Code - AD177/RYS

The Allen Easy-Grip is a remarkably simple device designed to make tractor-trailer airbrake coupling safer and easier.



Eye Wash with mounting bracket (500ml) First aid

Option Code - EYEWASHBRK

500ml Eyewash bottle complete with wall mounting bracket. Fully regulated by the HSE. A must have for any workshop.



FORS Approved Camera and Sensor Systems

Our range of fully certified FORS camera and sensor systems. Perfect for FORS Bronze, Silver, and Gold Levels. We make it super simple and easy when it comes to selecting which option is best for you. All of our installs are fully FORS accredited and are backed by a full 2 year on site warranty.



Included Equipment	 BRONZE PACK Rigids and Artics	 SILVER PACK Rigids and Artics	 GOLD PACK Rigids and Artics
	7" High Def Dash Monitor	✓	✓
Rear HD Night Vision Camera	✓	✓	✓
Forward HD Night Vision Camera			✓
Nearside HD Night Vision Camera	✓	✓	✓
Offside HD Night Vision Camera			✓
4 Channel, 1TB, DVR (Recording)			✓
Audible Talking Turn Alarm		✓	✓
Reverse Alarm			✓
Left Turn Interface	✓	✓	✓
Side Step Radar Scan (Blind Spot)		✓	✓

All systems are installed by highly trained engineers and all equipment carries a Reg 10 ECE Type Approval. Type approved fitment can also be arranged on some vehicle makes and models, this must be completed at Kuda UK, Ipswich if required.

March 2021

2024



From March 2021, the minimum DVS rating will be one star to enter or operate in Greater London and this will then increase to a minimum of three stars in 2024.

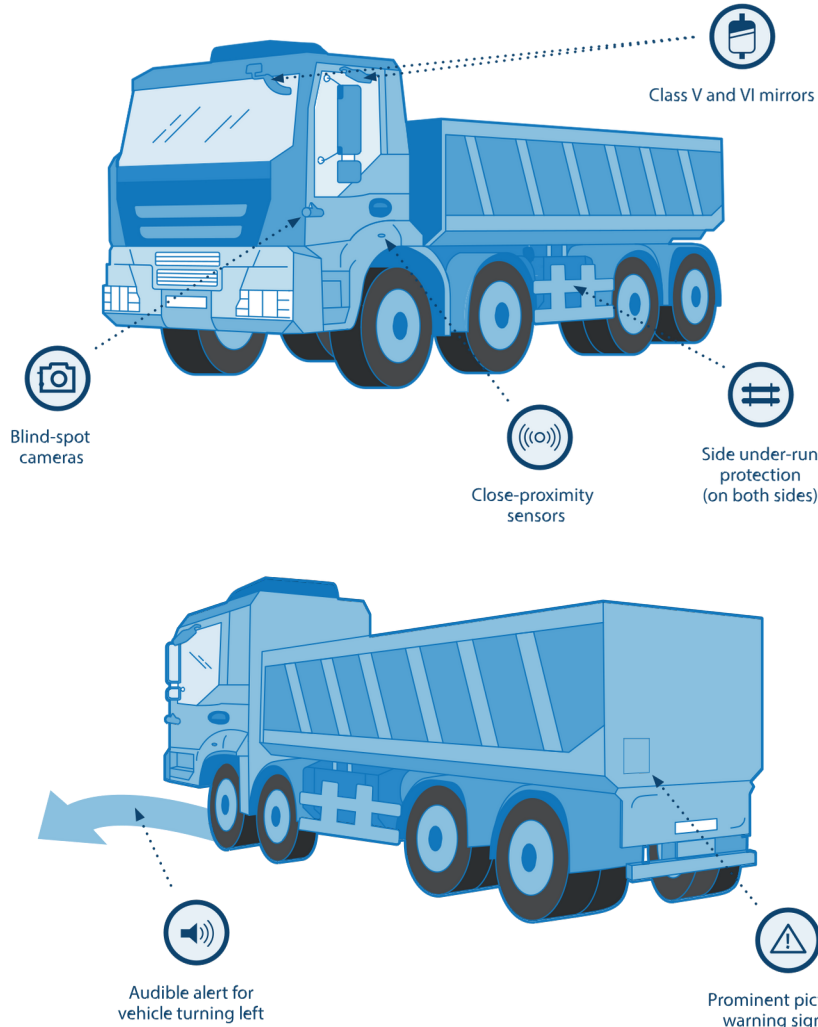
If your vehicle does not meet the DVS star rating or is not rated, you will need to meet the 'Safe System' requirements to be granted a permit.

Source: HGV Safety Permit Guidance

Direct Vision Standard

Here at Kuda we offer a fully compliant and type approved safe system, fitted and supported nationwide One Package which guarantees compliance with the Direct Vision Standard

If your vehicle is not rated (zero star), you will need to fit additional safety equipment – a 'Safe System'



Safe System Required Equipment

1. Class V mirror shall be fitted to the nearside of the vehicle.
2. Class VI mirror shall be fitted to the front of the vehicle.
3. Side under-run protection shall be fitted to both sides of the vehicle (except where this is impractical or proves to be impossible).
4. External pictorial stickers and markings shall be displayed on vehicles to warn vulnerable road users of the hazards around the vehicle.
5. A sensor system that alerts the driver to the presence of a vulnerable road user shall be fitted to the nearside of the vehicle.
6. Audible vehicle manoeuvring warning shall be fitted to warn vulnerable road users when a vehicle is turning left.
7. A fully operational camera monitoring system shall be fitted to the nearside of the vehicle



Lower Level Windows Type Approved Fitment

Along with camera and sensor requirements we are also able to offer lower level passenger door windows, fitted and fully type approved.

Our windows do not stop the passenger window from opening and are fully approved by Mercedes-Benz



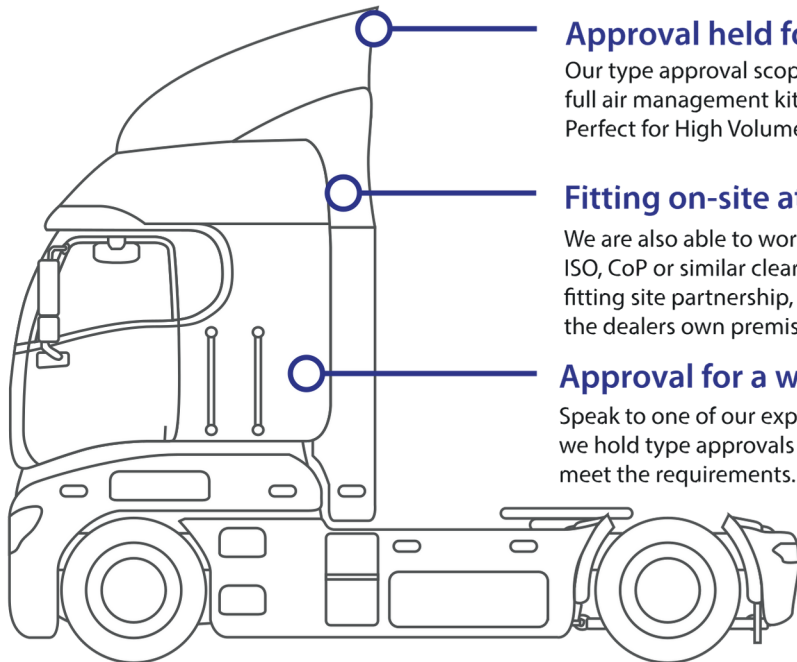
7" High Def Dash Monitor	✓
Nearside HD Night Vision Camera	✓
Class V and VI Mirrors	✓
Side Underrun Protection	Usually Factory Installed
Prominent Pictorial Safety Signs	Usually Factory Installed
Audible Talking Turn Alarm	✓
Left Turn Interface	✓
Side Step Radar Scan (Blind Spot)	✓
Rear HD Night Vision Camera	Not req, optional

Type Approval

Speak to our experts, we have you covered



Here at Kuda UK LTD we are proud that we have been Audited and Approved by the VCA for CoP (Conformity of Production) Clearance. This Clearance enables us to offer fully Type approved products and fitting services across a wide range of vehicles.



Approval held for up to 4.6m

Our type approval scope covers the fitment of a full air management kit to a height of 4.6m. Perfect for High Volume trailers.

Fitting on-site at Kuda UK, Ipswich

We are also able to work closely with dealers holding ISO, CoP or similar clearance to achieve a "satellite" fitting site partnership, enabling approved fitting at the dealers own premises.

Approval for a wide range of trucks

Speak to one of our experts to find out which chassis we hold type approvals on and how we can help you meet the requirements.

The CoP Clearance just further reinforces the quality of our products and services, when you purchase from Kuda UK you can rest assured that product you receive has been manufactured under the highest standards and followed our strict Quality Control processes.

Our in house Type Approval experts are able to advise on any questions you may have regarding the fitment of any of our products prior to registration and how this may effect a vehicles base approval.

We are able to issue Stage 2 Certificates of Conformity for work carried out at our assembly plant here at Kuda for a wide range of vehicles and products.

EMC REG 10 Approvals

- ✓ Microwaves
- ✓ Fridges
- ✓ Cameras
- ✓ Handbrake Alarms
- ✓ Inverters

We are able to fit a huge range of electronic equipment covered under EMC Reg 10 as part of our NSSTA and Whole Vehicle Type approval clearances.

So if you need a microwave, fridge, dash cam, reversing alarm or anything like it fitting to a vehicle prior to registration we are likely to have you covered.



The Kuda Fleet Division Difference

Every commercial fleet in the UK is driven by its own values on safety, reliability, punctuality, value and driver retention. In some ways this makes every fleet the same, but mostly each fleet and its management are entirely different. From the traffic office to the workshops, from tracking systems to vehicle makes and models, we understand that not every company has the same requirements. Whilst we can't help run your day to day operations we can ensure the specification of your new vehicles in one which will suit your operational requirements, budget and most importantly, ensure the drivers, which are the staple of your operation are able to do their work in the most comfortable, efficient and safer manner as possible.



From Tender to Delivery

1



Initial Specification

Our team will take the time to work through your existing tender specification with your chosen dealer and ensure that all of your requirements are met. We can also meet with you to discuss any new technologies or items which could aid in improving your operation or saving money on your existing specification.

2



Factory Delivery Direct to Kuda

Working closely with your dealer we will organise for your new vehicles to be delivered from the factory directly to our facility. The vehicles will be carefully checked by our experienced engineers to ensure your specified equipment can be mounted and the vehicles are the correct Type and Variant expected.

3



Additional Items Expertly Installed

Once your vehicles have been checked in and the specification agreed, our in-house team of engineers will proceed with the install of your additional equipment. Ensuring the positioning and operational functionality are to your exact requirements.

4



Vehicle Checked and Approved

Following the install of your equipment our internal Quality Control process will ensure each component is checked and signed off. The vehicles are then passed for Type Approval and a Stage 2 Certificate of Conformity issued for each one by our in-house Type Approval team.

Install Pre-Registration - Bill with the vehicle



Vehicle
Certification
Agency

All of our fitments are of course covered under Stage 2 Type Approval, meaning you can rest assured whatever you specify has been fitted not only to the vehicle manufacturers guidelines, but also fully compliant with all European and Domestic Type Approval legislation and regulations. This clearance from the VCA enables us to issue certificates of Conformity and modify your vehicles prior to registration. The main benefit of this for fleets (other than peace of mind) is that any additional equipment and fitments are able to be billed with the total cost of the vehicle from the dealer prior to the truck being registered and PDI'd.



Kuda Fitting Service

Our team of trained, mobile engineers are available across the UK to install over 90% of the products we offer, on-site, at your premises.

They are fully equipped in a modern fleet of vans, with the full compliance training and insurance. Our engineers can travel almost anywhere in the country (pre-booking required), either bringing the products to be fitted with them, or meeting products previously delivered by our carriers.

Currently we only offer our mobile fitment service for products supplied by us here at Kuda.

How much does it cost?

Well, it's a very simple calculation, in addition to the labour costs of the product fitment (please call us for a fitment quotation) we charge a simple £1.00 (Exc. VAT) per mile travelled to and from the job. Below is a map containing examples of travel rates to some central locations.

Mileage Calculation Examples

Fitting mileage is calculated using Google Maps. Start point is at IP7 7HA (Kuda UK), end point is the fitting location post code.

