



# TO SUIT MERCEDES ACTROS/AROCS/SPRINTER

## Aerodynamics and Accessories





Shown in GigaSpace



Shown in StreamSpace Narrow (2.3m)



Shown in BigSpace



Shown in StreamSpace Wide (2.5m)

**Introducing CabStore, our exclusive in cab storage with an OEM look and feel**

Large storage compartments increasing comfort inside

Perfect for additional in cab comforts and appliances

Quick and easy fitment mounts on factory and fixing points

Textured and colour matched OEM style interior finish

Long Distance - Cab Variant	Available	Type Approved
CompactSpace L Cab - 170mm Tunnel	●	●
CompactSpace L Cab - 320mm Tunnel	●	●
ClassicSpace L Cab - Level Floor	●	●
ClassicSpace L Cab - 170mm Tunnel	●	●
ClassicSpace L Cab - 320mm Tunnel	●	●
StreamSpace L Cab - 2.5m Wide Cab Level Floor	●	● Not Applicable <small>Can be fitted at customers site or at Kudu pre-registration</small>
StreamSpace L Cab - 2.3m Narrow Cab Level Floor	●	● Not Applicable <small>Can be fitted at customers site or at Kudu pre-registration</small>
StreamSpace L Cab - 2.3m 170mm Tunnel	●	● Not Applicable <small>Can be fitted at customers site or at Kudu pre-registration</small>
StreamSpace L Cab - 2.3m 320mm Tunnel	●	● Not Applicable <small>Can be fitted at customers site or at Kudu pre-registration</small>
BigSpace L Cab - Level Floor	●	● Not Applicable <small>Can be fitted at customers site or at Kudu pre-registration</small>
GigaSpace L Cab - Level Floor	●	● Not Applicable <small>Can be fitted at customers site or at Kudu pre-registration</small>

**Fitting Time**  
**2 Hours**

**Fitment Table Key**  
● Yes  
● See Notes  
● No

Nationwide fitting service available, please contact our fleet sales team for further information regarding prices, fitting times, type approval and any other queries.

*None of the products shown are genuine OEM parts and installation follows bodybuilder guidelines*

Distribution - Cab Variant	Available	Type Approved
CompactSpace M Cab - 170mm Tunnel	●	●
CompactSpace M Cab - 320mm Tunnel	●	●
ClassicSpace M Cab - 170mm Tunnel	●	●
ClassicSpace M Cab - 320mm Tunnel	●	●
ClassicSpace S Cab - 170mm Tunnel	●	●
ClassicSpace S Cab - 320mm Tunnel	●	●





Shown on 6x2



Shown on 6x2



Shown on 6x2



Shown on 6x2

**Tapered Edge for improved air flow**



**TreadSafe has been designed and tested to allow optimum airflow.**

By engineering a tapered profile, it is possible to decrease the amount of aerodynamic drag along the side of the vehicle.

**Safety Warnings pre-applied**



**Additional safety decals are applied to each side of the catwalk.**

TreadSafe offers a great platform to apply safety warnings to both the end user and also other road users.

**Super safe reverse punch tread**



**TreadSafe's reverse punch creates a seriously safe, anti-slip working area.**

The punch has been engineered with the optimum top roll radius removing any sharp edges but increasing grip.

**Long Distance - Cab Variant**

	Available	Type Approved
CompactSpace L Cab - 170mm Tunnel	●	●
CompactSpace L Cab - 320mm Tunnel	●	●
ClassicSpace L Cab - Level Floor	● 6x2 Chassis ● 4x2 Chassis	● Yes Must be fitted at Kuda UK or an approved satellite site
ClassicSpace L Cab - 170mm Tunnel	● 6x2 Chassis ● 4x2 Chassis	● Yes Must be fitted at Kuda UK or an approved satellite site
ClassicSpace L Cab - 320mm Tunnel	● 6x2 Chassis ● 4x2 Chassis	● Yes Must be fitted at Kuda UK or an approved satellite site
StreamSpace L Cab - 2.5m Wide Cab Level Floor	● 6x2 Chassis ● 4x2 Chassis	● Yes Must be fitted at Kuda UK or an approved satellite site
StreamSpace L Cab - 2.3m Narrow Cab Level Floor	● 6x2 Chassis ● 4x2 Chassis	● Yes Must be fitted at Kuda UK or an approved satellite site
StreamSpace L Cab - 2.3m 170mm Tunnel	● 6x2 Chassis ● 4x2 Chassis	● Yes Must be fitted at Kuda UK or an approved satellite site
StreamSpace L Cab - 2.3m 320mm Tunnel	● 6x2 Chassis ● 4x2 Chassis	● Yes Must be fitted at Kuda UK or an approved satellite site
BigSpace L Cab - Level Floor	● 6x2 Chassis ● 4x2 Chassis	● Yes Must be fitted at Kuda UK or an approved satellite site
GigaSpace L Cab - Level Floor	● 6x2 Chassis ● 4x2 Chassis	● Yes Must be fitted at Kuda UK or an approved satellite site

**Distribution - Cab Variant**

	Available	Type Approved
CompactSpace M Cab - 170mm Tunnel	●	●
CompactSpace M Cab - 320mm Tunnel	●	●
ClassicSpace M Cab - 170mm Tunnel	●	●
ClassicSpace M Cab - 320mm Tunnel	●	●
ClassicSpace S Cab - 170mm Tunnel	●	●
ClassicSpace S Cab - 320mm Tunnel	●	●

**Fitting Time**  
**1 Hour**

**Fitment Table Key**

● Yes   ● See Notes   ● No

Nationwide fitting service available, please contact our fleet sales team for further information regarding prices, fitting times, type approval and any other queries.

*None of the products shown are genuine OEM parts and installation follows bodybuilder guidelines*





Shown on StreamSpace



Shown on Mercedes Sprinter 2018-



Shown on Mercedes Sprinter 2020-



Shown on StreamSpace

**Our range of super tough, professional mirror protectors for Trucks and vans. Proving to be the number one choice for many fleets.**

- ✔ Provides outstanding protection to the vehicles mirror
- ✔ Available in all solid RAL colours
- ✔ Aerodynamic properties aiding airflow around the mirror
- ✔ Professional looking protection system, designed with fleets in mind

Long Distance - Cab Variant	Available	Type Approved
CompactSpace L Cab - 170mm Tunnel	● MirrorCam ● Mirrors	● No, must be fitted post-registration
CompactSpace L Cab - 320mm Tunnel	● MirrorCam ● Mirrors	● No, must be fitted post-registration
ClassicSpace L Cab - Level Floor	● MirrorCam ● Mirrors	● No, must be fitted post-registration
ClassicSpace L Cab - 170mm Tunnel	● MirrorCam ● Mirrors	● No, must be fitted post-registration
ClassicSpace L Cab - 320mm Tunnel	● MirrorCam ● Mirrors	● No, must be fitted post-registration
StreamSpace L Cab - 2.5m Wide Cab Level Floor	● MirrorCam ● Mirrors	● No, must be fitted post-registration
StreamSpace L Cab - 2.3m Narrow Cab Level Floor	● MirrorCam ● Mirrors	● No, must be fitted post-registration
StreamSpace L Cab - 2.3m 170mm Tunnel	● MirrorCam ● Mirrors	● No, must be fitted post-registration
StreamSpace L Cab - 2.3m 320mm Tunnel	● MirrorCam ● Mirrors	● No, must be fitted post-registration
BigSpace L Cab - Level Floor	● MirrorCam ● Mirrors	● No, must be fitted post-registration
GigaSpace L Cab - Level Floor	● MirrorCam ● Mirrors	● No, must be fitted post-registration

**Fitting Time**  
**30 Minutes**

**Fitment Table Key**

● Yes    ● See Notes    ● No

Distribution - Cab Variant	Available	Type Approved
CompactSpace M Cab - 170mm Tunnel	● MirrorCam ● Mirrors	● No, must be fitted post-registration
CompactSpace M Cab - 320mm Tunnel	● MirrorCam ● Mirrors	● No, must be fitted post-registration
ClassicSpace M Cab - 170mm Tunnel	● MirrorCam ● Mirrors	● No, must be fitted post-registration
ClassicSpace M Cab - 320mm Tunnel	● MirrorCam ● Mirrors	● No, must be fitted post-registration
ClassicSpace S Cab - 170mm Tunnel	● MirrorCam ● Mirrors	● No, must be fitted post-registration
ClassicSpace S Cab - 320mm Tunnel	● MirrorCam ● Mirrors	● No, must be fitted post-registration
Mercedes Sprinter, 2020 Onwards	● MirrorCam ● Mirrors	● No, must be fitted post-registration
Mercedes Sprinter 2018 On (Long Arm)	● MirrorCam ● Mirrors	● No, must be fitted post-registration

*None of the products shown are genuine OEM parts and installation follows bodybuilder guidelines*

Nationwide fitting service available, please contact our fleet sales team for further information regarding prices, fitting times, type approval and any other queries.





Shown in BigSpace



Shown in ClassicSpace



Shown in BigSpace



**iAM is our market leading, super sleek and aerodynamic range of air management kits for a large range of trucks. Our high volume iAM kits have been designed to improve the aerodynamic properties of the vehicle like never before.**

**LaserEye**  
Spoiler Adjustment

All kits are available with LaserEye, our revolutionary, 100% automatic spoiler adjustment system.

Long Distance - Cab Variant	Available	Type Approved
CompactSpace L Cab - 170mm Tunnel	● Top Spoiler ● Full AMK	● Yes Product not currently available in the UK Range
CompactSpace L Cab - 320mm Tunnel	● Top Spoiler ● Full AMK	● Yes Product not currently available in the UK Range
ClassicSpace L Cab - Level Floor	● Top Spoiler ● Full AMK	● Yes to 4.65m Must be fitted at Kuda UK or an approved satellite site
ClassicSpace L Cab - 170mm Tunnel	● Top Spoiler ● Full AMK	● Yes to 4.65m Must be fitted at Kuda UK or an approved satellite site
ClassicSpace L Cab - 320mm Tunnel	● Top Spoiler ● Full AMK	● Yes to 4.65m Must be fitted at Kuda UK or an approved satellite site
StreamSpace L Cab - 2.5m Wide Cab Level Floor	● Top Spoiler ● Full AMK	● Yes to 4.65m Must be fitted at Kuda UK or an approved satellite site
StreamSpace L Cab - 2.3m Narrow Cab Level Floor	● Top Spoiler ● Full AMK	● Yes to 4.65m Must be fitted at Kuda UK or an approved satellite site
StreamSpace L Cab - 2.3m 170mm Tunnel	● Top Spoiler ● Full AMK	● Yes to 4.65m Must be fitted at Kuda UK or an approved satellite site
StreamSpace L Cab - 2.3m 320mm Tunnel	● Top Spoiler ● Full AMK	● Yes to 4.65m Must be fitted at Kuda UK or an approved satellite site
BigSpace L Cab - Level Floor	● Top Spoiler ● Full AMK	● Yes to 4.65m Must be fitted at Kuda UK or an approved satellite site
GigaSpace L Cab - Level Floor	● Top Spoiler ● Full AMK	● Yes to 4.65m Must be fitted at Kuda UK or an approved satellite site

**Fitting Time**  
**2 - 4 Hours**

**Fitment Table Key**

● Yes    ● See Notes    ● No

Nationwide fitting service available, please contact our fleet sales team for further information regarding prices, fitting times, type approval and any other queries.

*None of the products shown are genuine OEM parts and installation follows bodybuilder guidelines*

Distribution - Cab Variant	Available	Type Approved
CompactSpace M Cab - 170mm Tunnel	● Top Spoiler ● Full AMK	● Yes Product not currently available in the UK Range
CompactSpace M Cab - 320mm Tunnel	● Top Spoiler ● Full AMK	● Yes Product not currently available in the UK Range
ClassicSpace M Cab - 170mm Tunnel	● Top Spoiler ● Full AMK	● Yes to 4.65m Must be fitted at Kuda UK or an approved satellite site
ClassicSpace M Cab - 320mm Tunnel	● Top Spoiler ● Full AMK	● Yes to 4.65m Must be fitted at Kuda UK or an approved satellite site
ClassicSpace S Cab - 170mm Tunnel	● Top Spoiler ● Full AMK	● Yes Product not currently available in the UK Range
ClassicSpace S Cab - 320mm Tunnel	● Top Spoiler ● Full AMK	● Yes Product not currently available in the UK Range





Shown in StreamSpace Wide/Narrow



Shown in GigaSpace



Shown in BigSpace



Shown in StreamSpace Wide/Narrow

**The industries leading 24v microwave oven, with its huge 20 litre capacity, powerful 800w cooking output, 3 year warranty and tailored fitting kits for almost every heavy truck. TruckChef is the perfect companion for any truck driver.**

**20L**  
Large 20L Capacity

**800W**  
Powerful Cooking

**24V**  
Perfect for Trucks

**3 YEAR**  
WARRANTY

**EMC Reg 10 Type Approved**

Unit carries it's own reg 10 approval and can be added to other stage 2 approvals.

Long Distance - Cab Variant	Available	Type Approved
CompactSpace L Cab - 170mm Tunnel	●	●
CompactSpace L Cab - 320mm Tunnel	●	●
ClassicSpace L Cab - Level Floor	●	●
ClassicSpace L Cab - 170mm Tunnel	●	●
ClassicSpace L Cab - 320mm Tunnel	●	●
StreamSpace L Cab - 2.5m Wide Cab Level Floor	●	●
StreamSpace L Cab - 2.3m Narrow Cab Level Floor	●	●
StreamSpace L Cab - 2.3m 170mm Tunnel	●	●
StreamSpace L Cab - 2.3m 320mm Tunnel	●	●
BigSpace L Cab - Level Floor	●	●
GigaSpace L Cab - Level Floor	●	●

**Fitting Time**  
**3 Hours**

**Fitment Table Key**

● Yes

● See Notes

● No

Nationwide fitting service available, please contact our fleet sales team for further information regarding prices, fitting times, type approval and any other queries.

*None of the products shown are genuine OEM parts and installation follows bodybuilder guidelines*

Distribution - Cab Variant	Available	Type Approved
CompactSpace M Cab - 170mm Tunnel	●	●
CompactSpace M Cab - 320mm Tunnel	●	●
ClassicSpace M Cab - 170mm Tunnel	●	●
ClassicSpace M Cab - 320mm Tunnel	●	●
ClassicSpace S Cab - 170mm Tunnel	●	●
ClassicSpace S Cab - 320mm Tunnel	●	●



# Mercedes Actros/Arocs/Sprinter

Aerodynamics and Accessories



## Mercedes Actros (2012-) Under Bunk Fridge

Option Code - FRIDGEMP4

It fits under the bunk in the sleeping compartment, inside the original drawer, thus leaving more space in the truck cab. The installation is quick and easy.

H: 410mm W: 310mm D: 685mm.

**indelB**

Fitting Time

**1 Hour**



## Fridge to suit vehicles with no Factory Underbunk Drawer

Option Code - TRUCKCHEFDAFXG

Introducing TruckChef. Our exclusive 24v microwave, 20L, 800W with 3 year return to base warranty.

**indelB**

Fitting Time

**2 Hours**



## Fridge to suit StreamSpace cab with engine tunnel

Option Code - FRIDGE-TB22

Our compressor refrigerator for the Original Equipment installation in the Mercedes Actros MP4 with an engine tunnel. The fridge fits under the bunk in the sleeping compartment, inside the original drawer, thus leaving more space in the truck cab.

**indelB**

Fitting Time

**1 Hour**



**Fitting Kit Included**

## Indel B 24v. Rear Mounted Truck Cab Cooler. Air Conditioner.

Option Code - TCBACK

Our rear mounted Indel B truck cab cooler. Introducing our new and exclusive Indel B range of cab coolers. With premium cooling output and fitting kits available for almost every make of truck they are a true market leader at a great price!

**indelB**

Fitting Time

**4 Hours**



**Fitting Kit Included**

## Indel B SW Oblo 1600 - The newest generation of roof mounted truck cab coolers

Option Code - SWOBLO1600

The Oblo 1600 cooler is designed to work both whilst the vehicle is running to provide additional cooling and also when parked up with the engine turned off! Perfect for keeping you cool on warm summer evenings.

**indelB**

Fitting Time

**4 Hours**



# Mercedes Actros/Arocs/Sprinter

Aerodynamics and Accessories



## Truck Door Window to suit Mercedes Actros/Arocs 4/5- Fitted

Option Code - TDW001

Full operational (Passenger window still goes up and down) lower level truck door window. Perfect for increased visibility from the cab. Price includes fitting at Kuda UK, Ipswich, approved fitment centre. Improves TFL DVS Star Rating.

Fitting Time  
**2 Days**



## Actros 4 & 5 (6x2) Main Chassis Catwalk In-Fill Panel (965mm Length)

Option Code - CATMP4CATWALK

This catwalk system works alongside the manufacturers original catwalk sections giving you more workspace on the chassis. We are able to create further work space safely on the back of the cab, filling it with this extra section of catwalk.

Fitting Time  
**30 Minutes**



## Actros 4 & 5 (4x2) Main Chassis Catwalk In-Fill Panel

Option Code - CATMP4CATWALK-4X2

This catwalk system works alongside the manufacturers original catwalk sections giving you more workspace on the chassis. We are able to create further work space safely on the back of the cab, filling it with this extra section of catwalk.

TreadSafe  
Safety Platform

Fitting Time  
**30 Minutes**



## Mercedes Actros (MP4) 6x2 Collapsible Run Up Ramp

Option Code - RUNUPMBCOL

Engineered to Collapse on Heavy Impacts. These ramps have been designed from the ground up to withstand all normal usage, however have built in collapsible properties. Fitted using existing chassis mounted bolts, meaning the fitting time is down to minutes on these ramps.

Fitting Time  
**30 Minutes**



## Mercedes Actros/Arocs 2013+ Wide Cab Stainless Steel Mirror Guards

Option Code - SSMIR012

Stainless Steel Mirror guards to suit the Mercedes Actros and Arocs 2013+ Wide Cab Models. Provides additional protection to the mirrors and cuts down on replacement mirror costs. Sold as a pair and come complete with all fixings.

Fitting Time  
**30 Minutes**



## Mercedes Actros/Arocs 2013+ Narrow Cab Stainless Steel Mirror Guards

Option Code - SSMIR029

Stainless Steel Mirror guards to suit the Mercedes Actros and Arocs 2013+ Narrow Cab Models. Provides additional protection to the mirrors and cuts down on replacement mirror costs. Sold as a pair and come complete with all fixings.

Fitting Time  
**30 Minutes**



# Mercedes Actros/Arocs/Sprinter

Aerodynamics and Accessories



## Mercedes Benz Actros MP4, BigSpace/GigaSpace Sunvisor

Option Code - 20305223

High Quality Acrylic sun visor in smoke to fit cabs with a front view mirror. Easy to mount with no additional drilling needed. Full fitting kit included.

**VEPRO**

Fitting Time  
**1 Hour**



## Mercedes Benz Actros MP4 StreamSpace/Arocs Wide Cab Sunvisor (2.5m)

Option Code - 20305226UKS

Reduces the sun glare. Enhances the look. Easy to mount with no additional drilling needed. Full fitting kit included.

**VEPRO**

Fitting Time  
**1 Hour**



## Mercedes Benz Actros MP4 StreamSpace/Arocs Narrow Cab (2.3m) Sunvisor

Option Code - 20305320UKS

Reduces the sun glare. Enhances the look. Easy to mount with no additional drilling needed. Full fitting kit included.

**VEPRO**

Fitting Time  
**1 Hour**



## Mercedes Actros/Arocs, MP4 ClassicSpace 2300mm Sunvisor

Option Code - 20305229UKS

Reduces the sun glare. Enhances the look. Easy to mount with no additional drilling needed. Full fitting kit included.

**VEPRO**

Fitting Time  
**1 Hour**



## Mercedes Actros BigSpace/GigaSpace (2012-) Sunvisor with Integrated Light Slots

Option Code - 20305224UKS

Mercedes Actros 4 (2012 onwards) Special sun visor which has four oval spotlight placements integrated. This sunvisor fits the GigaSpace and BigSpace cab configurations.

**VEPRO**

Fitting Time  
**1 Hour**



# Mercedes Actros/Arocs/Sprinter

Aerodynamics and Accessories

**VEPRO**



## Mercedes Benz Actros (MP4) Arocs Side Window Deflector

Option Code - 40208725

Side window deflectors suitable for the Mercedes Actros MP4 and Antos / Arocs. Eliminates fog and ventilates smoke while keeping out rain, easy to fit design and is made from high quality 3mm cast acrylic. Mounted with stainless steel clips to the door.

*Fitting Time*  
**1 Hour**



## Mercedes Actros 4/5, 6x2 Side Skirts to suit 450 Litre Tank

Option Code - 10500021

Side skirts to suit the Mercedes Actros 4 or 5, 6x2 chassis with the 450 litre fuel tank with fold down steps. Manufactured in **Mercedes White Gloss Gelcoat** finish. All fixings supplied.

*Fitting Time*  
**1 Hour**



## Mercedes Actros 4/5, 6x2 Side Skirts to suit 490 Litre Tank

Option Code - 10500021-490

Side skirts to suit the Mercedes Actros 4 or 5, 6x2 chassis with the 490 litre fuel tank with integrated steps in the tank. Manufactured in **Mercedes White Gloss Gelcoat** finish. All fixings supplied.

*Fitting Time*  
**1 Hour**



# Mercedes Actros/Arocs/Sprinter

Aerodynamics and Accessories

## Hadley 37.5" Round Airhorn. H00868ECE. Air Horn.

**HADLEY**<sup>®</sup>



Option Code - 80500019

Top Quality Hadley Airhorn with support arm

Multiple Finish Options



Stainless Steel Black Powder Coated

Fitting Time

**2 Hours**

**HADLEY**<sup>®</sup>

## Hadley 19" Round Airhorn. H00856ECE. Air Horn.



Option Code - 80500017

Top Quality Hadley Airhorn with support arm

Multiple Finish Options



Stainless Steel Black Powder Coated

Fitting Time

**2 Hours**

**HADLEY**<sup>®</sup>

## Hadley 22" Round Airhorn. H00855ECE. Air Horn.



Option Code - 80500016

Top Quality Hadley Airhorn with support arm

Multiple Finish Options



Stainless Steel Black Powder Coated

Fitting Time

**2 Hours**

**HADLEY**<sup>®</sup>

## Hadley 26" Rectangle Airhorn. H00978ECE. Air Horn.



Option Code - 80500021

Top Quality Hadley Airhorn with support arm

Fitting Time

**2 Hours**

## Hadley 29" Rectangle Airhorn. H00977ECE. Air Horn.

**HADLEY**<sup>®</sup>



Option Code - 80500023

Top Quality Hadley Airhorn with support arm

Fitting Time

**2 Hours**



# Mercedes Actros/Arocs/Sprinter

Aerodynamics and Accessories



## UltraLEDs Utah Full LED Oval Spotlight, White/Amber DRL

Option Code - ULEDUTAH

The style that the UltraLEDs Utah spotlight gives your vehicle with its dual white and amber position light, full ultra-bright LED beam and sleek design will make you melt!

Fitting Time

**2 Hours**



## 800mm UltraLEDs Horizon Low Profile LED Beacon lightbar, Reg65, ECE Approved

Option Code - ULED800

The newest generation in beacon lightbars has landed from UltraLEDs. Horizon brings you the latest in LED technology, packaged into an ultra slim, super sleek chassis that's just 20mm thin!

Fitting Time

**2 Hours**



## 1000mm UltraLEDs Horizon Low Profile LED Beacon lightbar, Reg65, ECE Approved

Option Code - ULED1000

The newest generation in beacon lightbars has landed from UltraLEDs. Horizon brings you the latest in LED technology, packaged into an ultra slim, super sleek chassis that's just 20mm thin!

Fitting Time

**2 Hours**



## 1200mm UltraLEDs Horizon Low Profile LED Beacon lightbar, Reg65, ECE Approved

Option Code - ULED1200

The newest generation in beacon lightbars has landed from UltraLEDs. Horizon brings you the latest in LED technology, packaged into an ultra slim, super sleek chassis that's just 20mm thin!

Fitting Time

**2 Hours**



## 2 Head LED Strobe/Warning Light, Amber, 12/24v

Option Code - ULEDSTB2

Power: 18W 6pcs 3W SMD LEDs - Dimensions: 100 x 28.5 x 11.9mm - Voltage: 10-30V DC - Flash Pattern: 12 flash modes

Fitting Time

**1 Hour**

# Mercedes Actros/Arocs/Sprinter

Aerodynamics and Accessories



## 4 Head LED Strobe/Warning Light, Amber, 12/24v

Option Code - ULEDSTB4

Power: 36W 12pcs 3W SMD LEDs - Dimensions: 100 x 28.5 x 11.9mm - Voltage: 10-30V DC - Flash Pattern: 19 Flash Modes



Fitting Time

**1 Hour**



## DubbelBrander Amber Lens, Amber Indicator Light, Full LED

Option Code - 46350274-LED

Double Brander / Dubble Burner Full LED Indicator Light. Complete with bulb holder



Fitting Time

**1 Hour**



## DubbelBrander Clear Lens, Amber White Light, Full LED

Option Code - 46350273-LED

Double Brander / Dubble Burner Full LED Indicator Light. Complete with bulb holder



Fitting Time

**1 Hour**



# Mercedes Actros/Arocs/Sprinter

Aerodynamics and Accessories

LUXMOV



## LUXMOV – Smart TV, 21.5" Full HD LED 12/24v – Perfect for Trucks, Vans, RV's, ECE Reg 10

Option Code – TV215HD

From LUXMOV, this 21.5" Smart TV is the perfect companion for on the road. It's fully ECE reg 10 type approved, making it one of the only TV's on the market that can be installed prior to registration in a vehicle.

Fitting Time

**1 Hour**

## Mercedes Actros Streamspace 230 Front LED Sign/Nameboard



Option Code – MER20110

SlimLED to suit Mercedes Actros Streamspace 230 – 20 x 110cm. Front sign LED is a thin, elegant and extremely effective lighted sign, designed with maximum output. With its 8mm thin sheet, Front Sign LED is among the thinnest in the trucking market



Fitting Time

**2 Hours**

## Mercedes Actros Streamspace 250 Front LED Sign/Nameboard



Option Code – MER20125

SlimLED to suit Mercedes Actros Streamspace 250 – 20 x 125cm. Front sign LED is a thin, elegant and extremely effective lighted sign, designed with maximum output. With its 8mm thin sheet, Front Sign LED is among the thinnest in the trucking market



Fitting Time

**2 Hours**

## Mercedes GigaSpace and Big Space Front LED Sign/Nameboard



Option Code – MER25150

SlimLED to suit Mercedes Actros Streamspace 250 – 20 x 150cm. Front sign LED is a thin, elegant and extremely effective lighted sign, designed with maximum output. With its 8mm thin sheet, Front Sign LED is among the thinnest in the trucking market



Fitting Time

**2 Hours**

# Mercedes Actros/Arocs/Sprinter

Aerodynamics and Accessories



## LightFix Mercedes Actros/Arocs ClassicSpace Sky Light "Wing"

Option Code - A25704-2

Stainless steel lightbar for mounting a maximum of 4 spotlights and 2 beacons. Tube diameter 70mm - mounted under the sunvisor brackets - drilling not necessary.



Multiple Finish Options



Fitting Time  
**2 Hours**



## LightFix Mercedes Arocs Big/StreamSpace 2500mm Plow Light

Option Code - A25704-3

Stainless steel lightbar for mounting a maximum of 2 main headlights and 4 spotlights on the front of the vehicle. Tube diameter 70mm - mounted on stable fixing points.



Multiple Finish Options



Fitting Time  
**2 Hours**



## LightFix Mercedes Actros/Arocs Classic/StreamSpace 2300mm Rear Light

Option Code - A25715-2

Stainless steel lightbar for mounting a maximum of 4 worklamps and 2 beacons. Tube diameter 70mm - mounted on the rear wall of the vehicle.



Multiple Finish Options



Fitting Time  
**2 Hours**



## LightFix Mercedes Actros/Arocs BigSpace Sky Light and Sky Bridge

Option Code - A25706-8

Stainless steel lightbar for mounting a maximum of 6 spotlights and a beacon bar. Tube diameter 70mm - mounted under the sunvisor brackets and onto the roof.



Multiple Finish Options



Fitting Time  
**2 Hours**



## LightFix Mercedes Actros GigaSpace Cab Liner

Option Code - A25748-4

Stainless steel LED lightbar - 2-parts set for driver and passenger side - including 16 red LEDs, 2 of them mounted in the tube ends. Tube diameter 60mm - mounted in existing hole patterns - drilling not necessary - foldable with the wind deflector.



Multiple Finish Options



Fitting Time  
**2 Hours**



# Mercedes Actros/Arocs/Sprinter

Aerodynamics and Accessories

## Mercedes GigaSpace full floor truck mats carpet - 1 piece



Option Code - TMMGIGAF

High quality and hard wearing rubber truck mats. Designed to fit perfectly in your vehicle. Please add the year of registration and type of passenger seat your vehicle has (Air/Fixed/Folding) to the notes at the checkout when ordering this product.

Fitting Time  
**5 Minutes**

## Mercedes GigaSpace full floor truck mats rubber - 1 piece



Option Code - TMRUBMGIGAF

High quality and hard wearing rubber truck mats. Designed to fit perfectly in your vehicle. Please add the year of registration and type of passenger seat your vehicle has (Air/Fixed/Folding) to the notes at the checkout when ordering this product.

Fitting Time  
**5 Minutes**

## Mercedes GigaSpace 3 piece set truck mats - rubber 3 piece



Option Code - TMRUBGIGAP

High quality and hard wearing rubber truck mats. Designed to fit perfectly in your vehicle. Please add the year of registration and type of passenger seat your vehicle has (Air/Fixed/Folding) to the notes at the checkout when ordering this product.

Fitting Time  
**5 Minutes**



## ProTough Seat Covers to suit Mercedes Antos/Arocs/Actros MP4 MP5 with folding passenger seat

Option Code - PT5247

ProTough, Super hard wearing seat covers are the only option when it comes to professional grade protection for your seats and interior. The double stitched construction and tough material make them your ultimate friend against dirt and grime in your cab.



Fitting Time  
**30 Mins**



## ProTough Seat Covers to suit Mercedes Antos/Arocs/Actros MP4 MP5 with fixed passenger seat

Option Code - PT5246

ProTough, Super hard wearing seat covers are the only option when it comes to professional grade protection for your seats and interior. The double stitched construction and tough material make them your ultimate friend against dirt and grime in your cab.



Fitting Time  
**30 Mins**



## Mercedes Sprinter IV (2018 onwards) Sleeper Pod

Option Code - 50200029-18

For long-distance use of vans, we offer you a comfortable place to sleep with our KUDA Aerolux roof sleeping cabins. Our roof sleeping cabins have a spacious interior. The standard equipment, the high quality standard and the aerodynamic design speak for themselves.

Fitting Time  
**1 Week**

**VEPRO**



## Mercedes Sprinter (New) 2018 Onwards Side Window Deflectors

Option Code - 40208542

Eliminates fog and ventilates smoke while keeping out rain. Easy to fit design. Made from high quality 3mm cast acrylic. Mounted between the window and window's rubber gasket.

Fitting Time  
**1 Hour**

**VEPRO**



## Mercedes Sprinter/VW Crafter 2006-2018 Side Window Deflectors

Option Code - 40208536

Side window deflectors suitable for Mercedes Sprinter / Crafter 2006-2018. Eliminates fog and ventilates smoke while keeping out rain and easy to fit design. Made from high quality 3mm cast acrylic. Mounted between the window and window's rubber gasket

Fitting Time  
**1 Hour**

**VEPRO**



## Mercedes Benz Sprinter Pre 2006 Side Window Deflectors

Option Code - 40208701

Side window deflectors suitable for Mercedes Benz Sprinter 2006. Eliminates fog and ventilates smoke while keeping out rain. Easy to fit design. Made from high quality 3mm cast acrylic. Mounted with stainless steel clips to the door. Special order only.

Fitting Time  
**1 Hour**



## Mercedes Sprinter 2006 Onwards (Inc 2019 Facelift) 2006-2018 Sunvisor

Option Code - 20303052S

Acrylic Sun Visor To Suit The 2006 Onwards Models Including The New 2019.

Fitting Time  
**1 Hour**

**VEPRO**



# Mercedes Sprinter

Aerodynamics and Accessories



## Mercedes Sprinter Normal/High Roof Sunvisor

Option Code - 20303047

Acrylic Sun visor to suit the Mercedes Sprinter Normal/High Roof Van >2006

**VEPRO**

*Fitting Time*

**1 Hour**

## Fire and Hazchem Bundle



Option Code - HAZKIT

- 1 x 9Kg Fire Extinguisher Box and Bracket
- 1 x 9Kg Fire Extinguisher
- 1 x 3Kg Fire Extinguisher
- 1 x 400 x 300mm Galvanised Hazchem Plate

Fitting Time  
**1 Hour**

## LifeHammer Safety Hammer Plus with EFS (Orange)

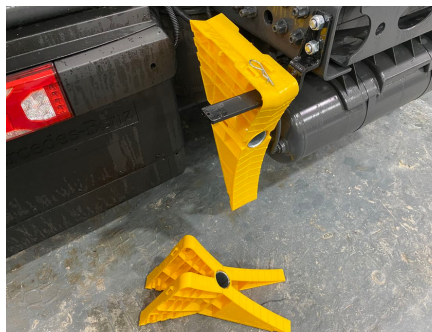


Option Code - HPNOEFSBU

With Easy Fix System: With this system you can mount the safety hammer on the middle console. Rotate the small click-adaptor for optimal positioning. It is possible to use the easy fix system in combination with the pro adapter. No screws are required to mount this system.

**LIFEHAMMER**

Fitting Time  
**5 Minutes**



## Universal, X-Block Wheel Chock Kit with chassis bracket

Option Code - XBL-KIT

This super quick to fit, folding HGV wheel chock kit is a must have for any haulier, fleet or workshop. The kit comes with a pair of the revolutionary X-Block wheel chocks, our universal chassis mount bracket, R-Clip and Bolt kit. Ready for you to fit!

**XBlock**

Fitting Time  
**5 Minutes**

## BriteAngle LED Road Safety Warning Triangle



Option Code - BRITEANGLE

Be safe and seen with this High Intensity LED Warning Triangle from BriteAngle. Quick and Easy to deploy and super effective at the roadside.

**BriteAngle**

Fitting Time  
**5 Minutes**

## No Drill Firebox and Bracket for to suit Mercedes Actros/Arocs 4/5



Option Code - FIREBOXBRKT

This Fire Box bracket kit is specifically designed to fit the Mercedes Actros / Arocs 4 / 5 cabs. This kit means you DO NOT have to drill the cab, It's a simple 4 bolt install with everything needed! Fire Box and Extinguisher NOT included.

Fitting Time  
**30 Minutes**



# Mercedes Actros/Arocs/Sprinter

## Aerodynamics and Accessories



### Fresnel Lens

Option Code - FRESNEL

Make it easy to monitor the vehicles blind spot



### ADR Kit - Complete in Tool Box

Option Code - KUD76

Rubber boots, gasmask, ABEK1-Filter, LED Torch, eye wash liquid, set of overalls, set of chemical gloves, set of protective glasses, security vest, covering carpet for oil spills and plastic shovel



### 30L Oil and Chemical Spill Kit

Option Code - KUD77

20 pads, 3 socks, dammit slab, disposable bag and tie, gloves and goggles



### Truck and Van First Aid Kit - Travel Kit

Option Code - KUD79

From St. Johns Ambulance and designed specifically for truck and van drivers, this kit comes in an easy to store soft green pouch with all you need for any roadside first aid emergency.



### Easy Grip "C" Coupling Handle (Pair)

Option Code - AD177/RYS

The Allen Easy-Grip is a remarkably simple device designed to make tractor-trailer airbrake coupling safer and easier.



### Eye Wash with mounting bracket (500ml) First aid

Option Code - EYEWASHWBRK

500ml Eyewash bottle complete with wall mounting bracket. Fully regulated by the HSE. A must have for any workshop.



# FORS Approved Camera and Sensor Systems

Our range of fully certified FORS camera and sensor systems. Perfect for FORS Bronze, Silver, and Gold Levels. We make it super simple and easy when it comes to selecting which option is best for you. All of our installs are fully FORS accredited and are backed by a full 2 year on site warranty.



Included Equipment	 <b>BRONZE PACK</b> Rigids and Artics	 <b>SILVER PACK</b> Rigids and Artics	 <b>GOLD PACK</b> Rigids and Artics
	7" High Def Dash Monitor	✓	✓
Rear HD Night Vision Camera	✓	✓	✓
Forward HD Night Vision Camera			✓
Nearside HD Night Vision Camera	✓	✓	✓
Offside HD Night Vision Camera			✓
4 Channel, 1TB, DVR (Recording)			✓
Audible Talking Turn Alarm		✓	✓
Reverse Alarm			✓
Left Turn Interface	✓	✓	✓
Side Step Radar Scan (Blind Spot)		✓	✓

All systems are installed by highly trained engineers and all equipment carries a Reg 10 ECE Type Approval. Type approved fitment can also be arranged on some vehicle makes and models, this must be completed at Kuda UK, Ipswich if required.



March 2021

2024



From March 2021, the minimum DVS rating will be one star to enter or operate in Greater London and this will then increase to a minimum of three stars in 2024.

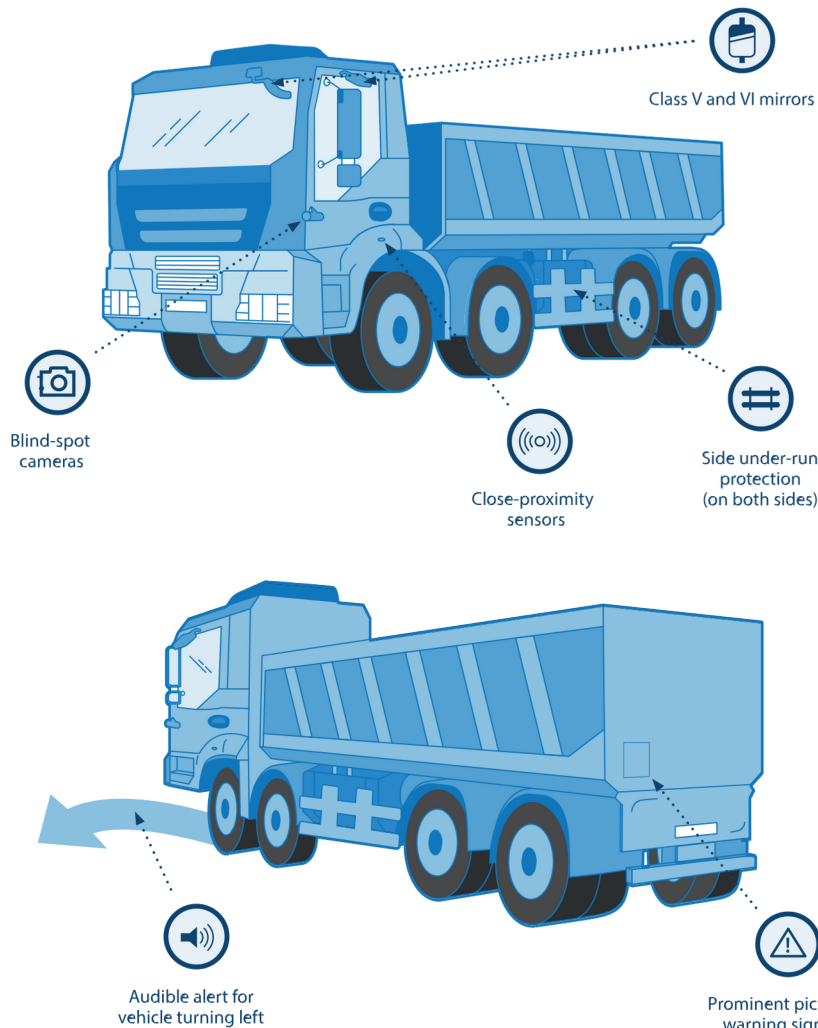
If your vehicle does not meet the DVS star rating or is not rated, you will need to meet the 'Safe System' requirements to be granted a permit.

Source: HGV Safety Permit Guidance

# Direct Vision Standard

Here at Kuda we offer a fully compliant and type approved safe system, fitted and supported nationwide One Package which guarantees compliance with the Direct Vision Standard

**If your vehicle is not rated (zero star), you will need to fit additional safety equipment – a 'Safe System'**



## Safe System Required Equipment

1. Class V mirror shall be fitted to the nearside of the vehicle.
2. Class VI mirror shall be fitted to the front of the vehicle.
3. Side under-run protection shall be fitted to both sides of the vehicle (except where this is impractical or proves to be impossible).
4. External pictorial stickers and markings shall be displayed on vehicles to warn vulnerable road users of the hazards around the vehicle.
5. A sensor system that alerts the driver to the presence of a vulnerable road user shall be fitted to the nearside of the vehicle.
6. Audible vehicle manoeuvring warning shall be fitted to warn vulnerable road users when a vehicle is turning left.
7. A fully operational camera monitoring system shall be fitted to the nearside of the vehicle



## Lower Level Windows Type Approved Fitment

Along with camera and sensor requirements we are also able to offer lower level passenger door windows, fitted and fully type approved.

Our windows do not stop the passenger window from opening and are fully approved by Mercedes-Benz



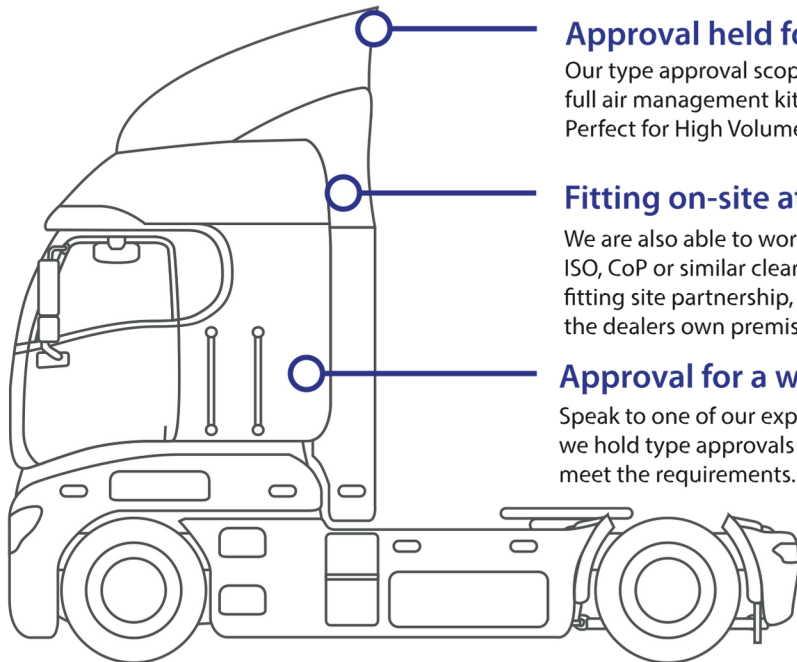
7" High Def Dash Monitor	✓
Nearside HD Night Vision Camera	✓
Class V and VI Mirrors	✓
Side Underrun Protection	Usually Factory Installed
Prominent Pictorial Safety Signs	Usually Factory Installed
Audible Talking Turn Alarm	✓
Left Turn Interface	✓
Side Step Radar Scan (Blind Spot)	✓
Rear HD Night Vision Camera	Not req, optional

# Type Approval

Speak to our experts, we have you covered



Here at Kuda UK LTD we are proud that we have been Audited and Approved by the VCA for CoP (Conformity of Production) Clearance. This Clearance enables us to offer fully Type approved products and fitting services across a wide range of vehicles.



## Approval held for up to 4.6m

Our type approval scope covers the fitment of a full air management kit to a height of 4.6m. Perfect for High Volume trailers.

## Fitting on-site at Kuda UK, Ipswich

We are also able to work closely with dealers holding ISO, CoP or similar clearance to achieve a "satellite" fitting site partnership, enabling approved fitting at the dealers own premises.

## Approval for a wide range of trucks

Speak to one of our experts to find out which chassis we hold type approvals on and how we can help you meet the requirements.

The CoP Clearance just further reinforces the quality of our products and services, when you purchase from Kuda UK you can rest assured that product you receive has been manufactured under the highest standards and followed our strict Quality Control processes.

Our in house Type Approval experts are able to advise on any questions you may have regarding the fitment of any of our products prior to registration and how this may effect a vehicles base approval.

We are able to issue Stage 2 Certificates of Conformity for work carried out at our assembly plant here at Kuda for a wide range of vehicles and products.

## EMC REG 10 Approvals

- ✓ Microwaves
- ✓ Fridges
- ✓ Cameras
- ✓ Handbrake Alarms
- ✓ Inverters

We are able to fit a huge range of electronic equipment covered under EMC Reg 10 as part of our NSSTA and Whole Vehicle Type approval clearances.

So if you need a microwave, fridge, dash cam, reversing alarm or anything like it fitting to a vehicle prior to registration we are likely to have you covered.





## The Kuda Fleet Division Difference

Every commercial fleet in the UK is driven by its own values on safety, reliability, punctuality, value and driver retention. In some ways this makes every fleet the same, but mostly each fleet and its management are entirely different. From the traffic office to the workshops, from tracking systems to vehicle makes and models, we understand that not every company has the same requirements. Whilst we can't help run your day to day operations we can ensure the specification of your new vehicles in one which will suit your operational requirements, budget and most importantly, ensure the drivers, which are the staple of your operation are able to do their work in the most comfortable, efficient and safer manner as possible.



## From Tender to Delivery

1



### Initial Specification

Our team will take the time to work through your existing tender specification with your chosen dealer and ensure that all of your requirements are met. We can also meet with you to discuss any new technologies or items which could aid in improving your operation or saving money on your existing specification.

2



### Factory Delivery Direct to Kuda

Working closely with your dealer we will organise for your new vehicles to be delivered from the factory directly to our facility. The vehicles will be carefully checked by our experienced engineers to ensure your specified equipment can be mounted and the vehicles are the correct Type and Variant expected.

3



### Additional Items Expertly Installed

Once your vehicles have been checked in and the specification agreed, our in-house team of engineers will proceed with the install of your additional equipment. Ensuring the positioning and operational functionality are to your exact requirements.

4



### Vehicle Checked and Approved

Following the install of your equipment our internal Quality Control process will ensure each component is checked and signed off. The vehicles are then passed for Type Approval and a Stage 2 Certificate of Conformity issued for each one by our in-house Type Approval team.

## Install Pre-Registration - Bill with the vehicle



Vehicle  
Certification  
Agency

All of our fitments are of course covered under Stage 2 Type Approval, meaning you can rest assured whatever you specify has been fitted not only to the vehicle manufacturers guidelines, but also fully compliant with all European and Domestic Type Approval legislation and regulations. This clearance from the VCA enables us to issue certificates of Conformity and modify your vehicles prior to registration. The main benefit of this for fleets (other than peace of mind) is that any additional equipment and fitments are able to be billed with the total cost of the vehicle from the dealer prior to the truck being registered and PDI'd.





## Kuda Fitting Service

Our team of trained, mobile engineers are available across the UK to install over 90% of the products we offer, on-site, at your premises.

They are fully equipped in a modern fleet of vans, with the full compliance training and insurance. Our engineers can travel almost anywhere in the country (pre-booking required), either bringing the products to be fitted with them, or meeting products previously delivered by our carriers.

Currently we only offer our mobile fitment service for products supplied by us here at Kuda.

## How much does it cost?

Well, it's a very simple calculation, in addition to the labour costs of the product fitment (please call us for a fitment quotation) we charge a simple £1.00 (Exc. VAT) per mile travelled to and from the job. Below is a map containing examples of travel rates to some central locations.

## Mileage Calculation Examples

Fitting mileage is calculated using Google Maps. Start point is at IP7 7HA (Kuda UK), end point is the fitting location post code.

