

HIGHLY VISIBLE, SUPER SAFE CHASSIS CATWALK SYSTEM.



ANTI-SLIP

# CATWALK

SYSTEM



# TESTED, APPROVED, AND USED BY LEADING FLEETS ACROSS EUROPE AND THE UK



**DO NOT ENTER FROM THIS SIDE**



TreadSafe

## Tapered Edge For Improved Airflow



**TreadSafe has been designed and tested to allow optimum airflow.**

By engineering a tapered profile, aerodynamic drag along the side of the vehicle is reduced.

## Super Safe Reverse Punch Tread



**Creating a seriously safe anti-slip working area.**

The punch is engineered with the optimum top roll radius, increasing grip and removing sharp edges.

## Safety Warnings Pre-Applied



**Additional safety decals are applied to each side of the catwalk.**

TreadSafe offers a great platform to apply safety warnings to both the end user and other road users.

## Easy Access For Service Purposes



**Easy access to any chassis mounted parts on service.**

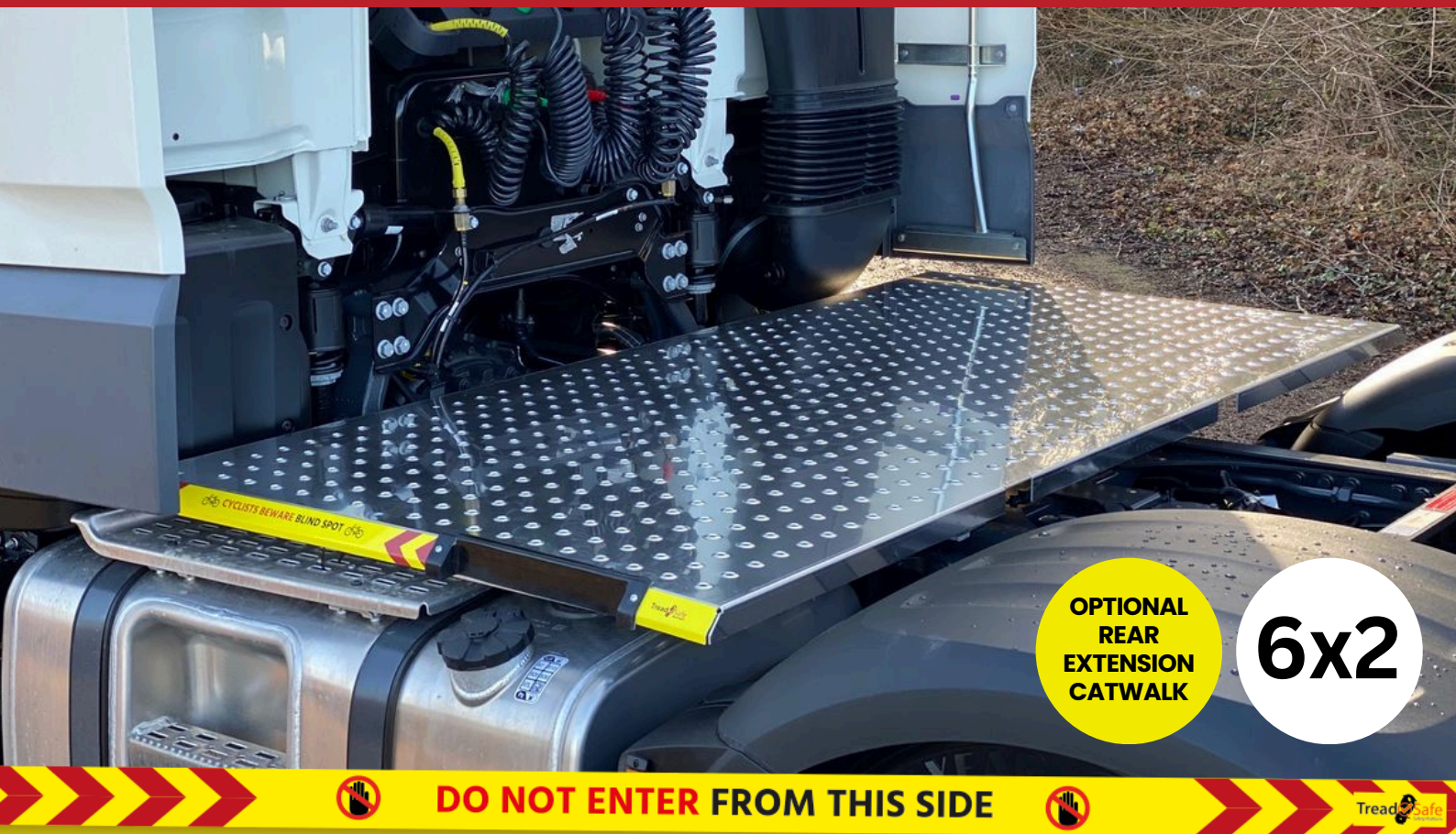
We have engineered our catwalks in a way that makes them easy to remove for vehicle maintenance.

# TABLE OF CONTENTS

<b>DAF.....</b>	<b>4-6</b>
<b>Iveco.....</b>	<b>7</b>
<b>MAN.....</b>	<b>8-12</b>
<b>Mercedes.....</b>	<b>13</b>
<b>Renault.....</b>	<b>14-16</b>
<b>Scania.....</b>	<b>17</b>



## 4. SUITABLE FOR DAF XF (EURO 6)



### Key Specifications

By creating a new sub-frame which raises the catwalk to a level platform, we are able to create a large, safe, anti-slip working area behind the cab.

The platform is mounted in a way which is easy to remove for vehicle maintenance. Additional catwalk sizes are available upon request.

Additional safety decals are applied to provide blind spot warnings and safety notices to other bad road users and the driver/ operator.

Tested, approved and used by many of the UK and Europe's leading fleets. Galvanised sub-frame. Aluminium catwalk sections

**Part Number: SAFECATDAF**  
**QuickFind Code: 13516**



## 5. SUITABLE FOR DAF CF (EURO 6)



4x2

**Part Number: SAFECATDAFCF**  
**QuickFind Code: 16056**

### Key Specifications

By creating a new sub-frame which raises the catwalk to a level platform, we are able to create a large, safe, anti-slip working area behind the cab.

The platform is mounted in a way which is easy to remove for vehicle maintenance. Additional catwalk sizes are available upon request.

Additional safety decals are applied to provide blind spot warnings and safety notices to other bad road users and the driver/ operator.

Tested, approved and used by many of the UK and Europe's leading fleets. Galvanised sub-frame. Aluminium catwalk sections



## 6. SUITABLE FOR DAF XD/XF/XG/XG+



IN-FILL  
PANELS  
AVAILABLE

6x2



**DO NOT ENTER FROM THIS SIDE**



TreadSafe

### Key Specifications

By creating a new sub-frame which raises the catwalk to a level platform, we are able to create a large, safe, anti-slip working area behind the cab.

The platform is mounted in a way which is easy to remove for vehicle maintenance. Additional catwalk sizes are available upon request.

Additional safety decals are applied to provide blind spot warnings and safety notices to other bad road users and the driver/ operator.

Tested, approved and used by many of the UK and Europe's leading fleets. Galvanised sub-frame. Aluminium catwalk sections

**Part Number: SAFECATDAFXG**  
**QuickFind Code: 16984**



## 7. SUITABLE FOR IVECO S-WAY



6x2

IN-FILL  
PANELS  
AVAILABLE



DO NOT ENTER FROM THIS SIDE



TreadSafe

**Part Number: SAFECATIVSWAY**  
**QuickFind Code: 16483**

### Key Specifications

By creating a new sub-frame which raises the catwalk to a level platform, we are able to create a large, safe, anti-slip working area behind the cab.

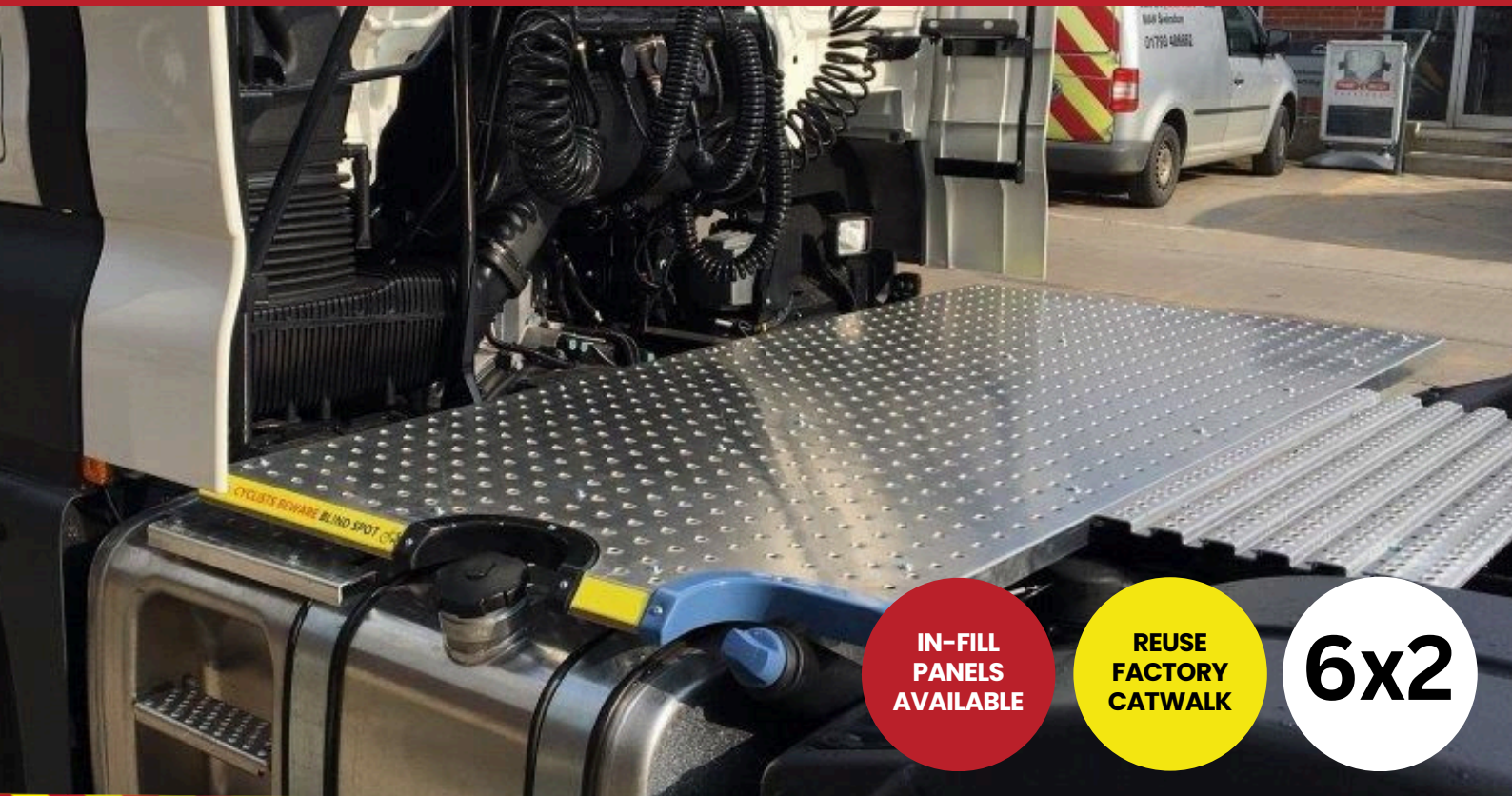
The platform is mounted in a way which is easy to remove for vehicle maintenance. Additional catwalk sizes are available upon request.

Additional safety decals are applied to provide blind spot warnings and safety notices to other bad road users and the driver/ operator.

Tested, approved and used by many of the UK and Europe's leading fleets. Galvanised sub-frame. Aluminium catwalk sections



## 8. SUITABLE FOR MAN TGX (EURO 6)



**DO NOT ENTER FROM THIS SIDE**



TreadSafe

### Key Specifications

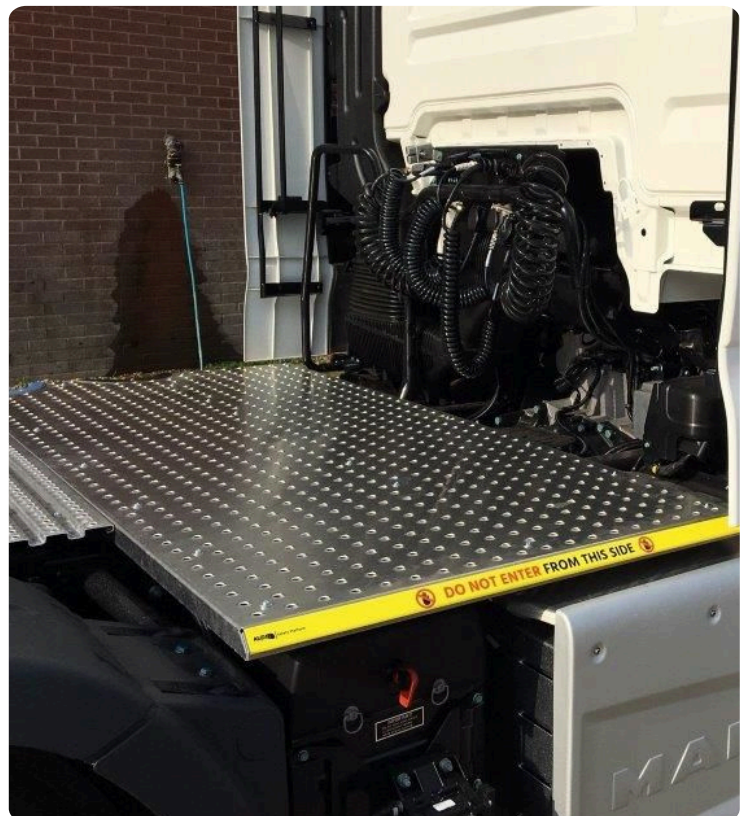
By creating a new sub-frame which raises the catwalk to a level platform, we are able to create a large, safe, anti-slip working area behind the cab.

The platform is mounted in a way which is easy to remove for vehicle maintenance. Additional catwalk sizes are available upon request.

Additional safety decals are applied to provide blind spot warnings and safety notices to other bad road users and the driver/ operator.

Tested, approved and used by many of the UK and Europe's leading fleets. Galvanised sub-frame. Aluminium catwalk sections

**Part Number: SAFECATMAN**  
**QuickFind Code: 13521**





## 9. SUITABLE FOR MAN TGS 3.9M WHEELBASE (EURO 6)



**DO NOT ENTER FROM THIS SIDE**



TreadSafe

**Part Number: SAFECATMAN4X2**  
**QuickFind Code: 14134**

### Key Specifications

By creating a new sub-frame which raises the catwalk to a level platform, we are able to create a large, safe, anti-slip working area behind the cab.

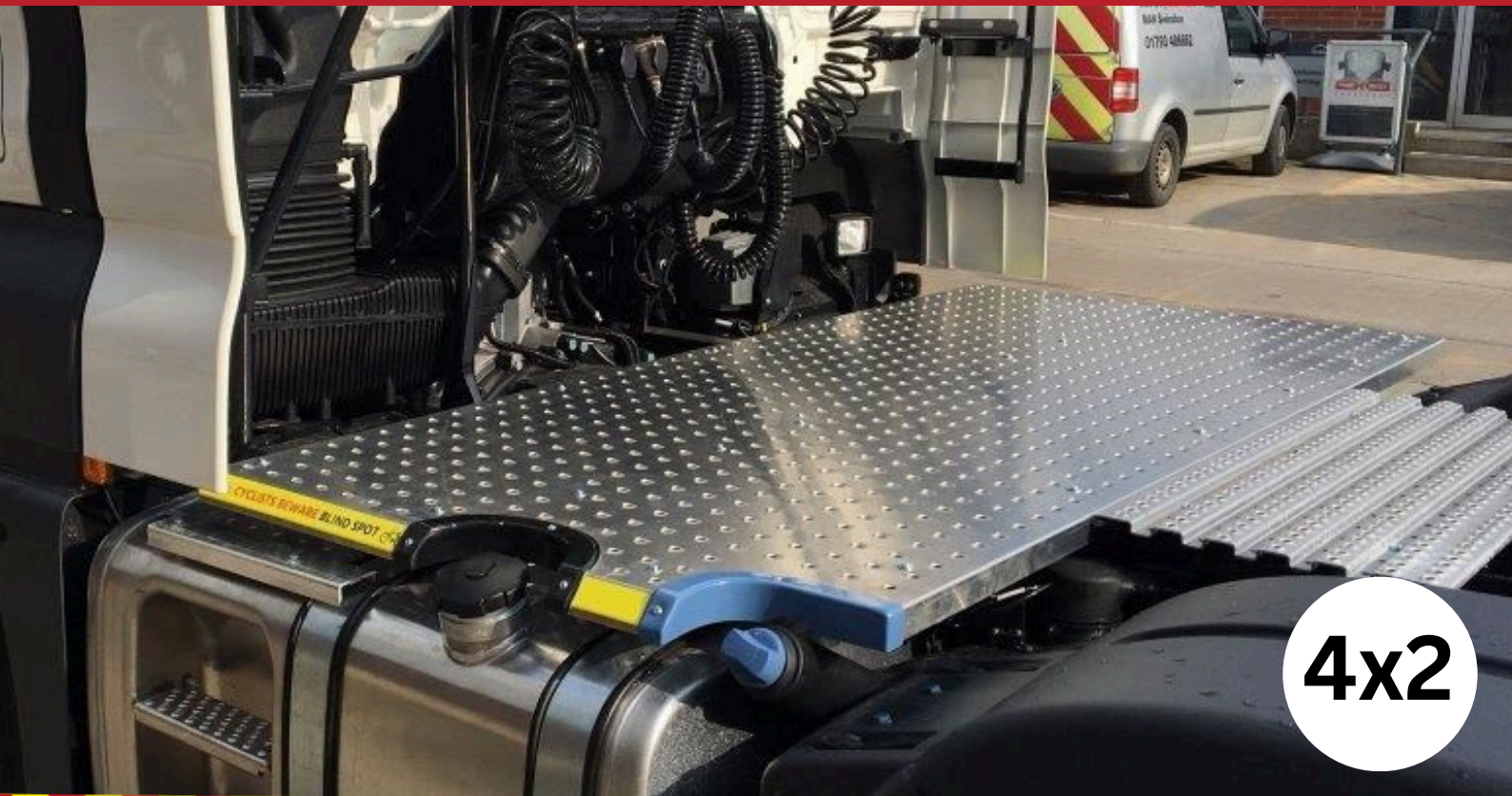
The platform is mounted in a way which is easy to remove for vehicle maintenance. Additional catwalk sizes are available upon request.

Additional safety decals are applied to provide blind spot warnings and safety notices to other bad road users and the driver/ operator.

Tested, approved and used by many of the UK and Europe's leading fleets. Galvanised sub-frame. Aluminium catwalk sections



## 10. SUITABLE FOR MAN TGS 3.6M WHEELBASE (EURO 6)



4x2



**DO NOT ENTER FROM THIS SIDE**



TreadSafe

### Key Specifications

By creating a new sub-frame which raises the catwalk to a level platform, we are able to create a large, safe, anti-slip working area behind the cab.

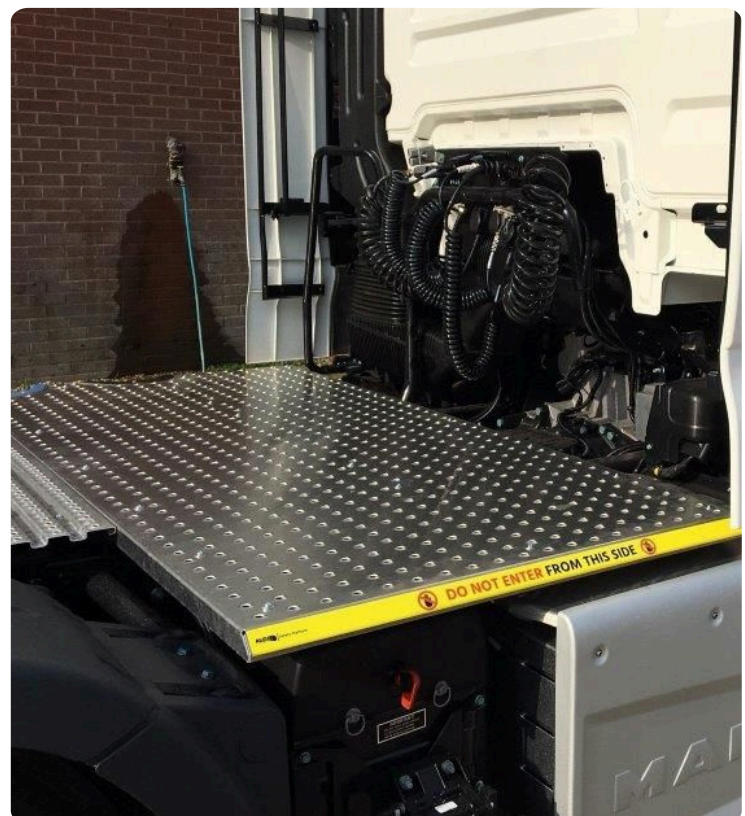
The platform is mounted in a way which is easy to remove for vehicle maintenance. Additional catwalk sizes are available upon request.

Additional safety decals are applied to provide blind spot warnings and safety notices to other bad road users and the driver/ operator.

Tested, approved and used by many of the UK and Europe's leading fleets. Galvanised sub-frame. Aluminium catwalk sections

**Part Number: SAFECATMAN4X236**

**QuickFind Code: 15088**



## 11. SUITABLE FOR MAN MAN TG3 TGX / TGS 3.9M WHEELBASE



4x2

IN-FILL  
PANELS  
AVAILABLE



DO NOT ENTER FROM THIS SIDE



TreadSafe

**Part Number: SAFECATMANTG3S4X2**

**QuickFind Code: 16829**

### Key Specifications

By creating a new sub-frame which raises the catwalk to a level platform, we are able to create a large, safe, anti-slip working area behind the cab.

The platform is mounted in a way which is easy to remove for vehicle maintenance. Additional catwalk sizes are available upon request.

Additional safety decals are applied to provide blind spot warnings and safety notices to other bad road users and the driver/ operator.

Tested, approved and used by many of the UK and Europe's leading fleets. Galvanised sub-frame. Aluminium catwalk sections



## 12. SUITABLE FOR MAN TG3 TGX



### Key Specifications

By creating a new sub-frame which raises the catwalk to a level platform, we are able to create a large, safe, anti-slip working area behind the cab.

The platform is mounted in a way which is easy to remove for vehicle maintenance. Additional catwalk sizes are available upon request.

Additional safety decals are applied to provide blind spot warnings and safety notices to other bad road users and the driver/ operator.

Tested, approved and used by many of the UK and Europe's leading fleets. Galvanised sub-frame. Aluminium catwalk sections

**Part Number: SAFECATMANGX**  
**QuickFind Code: 16854**



## 13. SUITABLE FOR MERCEDES ACTROS 4 & 5



**DO NOT ENTER FROM THIS SIDE**



TreadSafe

**Part Number: SAFECATMB**  
**QuickFind Code: 13529**

### Key Specifications

By creating a new sub-frame which raises the catwalk to a level platform, we are able to create a large, safe, anti-slip working area behind the cab.

The platform is mounted in a way which is easy to remove for vehicle maintenance. Additional catwalk sizes are available upon request.

Additional safety decals are applied to provide blind spot warnings and safety notices to other bad road users and the driver/ operator.

Tested, approved and used by many of the UK and Europe's leading fleets. Galvanised sub-frame. Aluminium catwalk sections



## 14. SUITABLE FOR RENAULT T RANGE



6x2

OPTIONAL  
REAR  
EXTENSION  
CATWALK



DO NOT ENTER FROM THIS SIDE



TreadSafe

### Key Specifications

By creating a new sub-frame which raises the catwalk to a level platform, we are able to create a large, safe, anti-slip working area behind the cab.

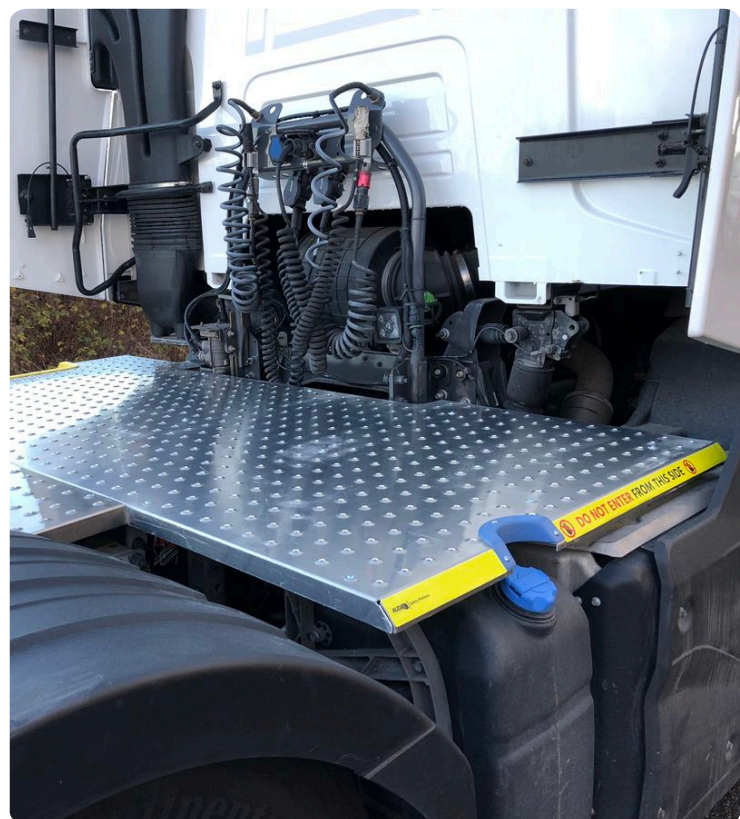
The platform is mounted in a way which is easy to remove for vehicle maintenance. Additional catwalk sizes are available upon request.

Additional safety decals are applied to provide blind spot warnings and safety notices to other bad road users and the driver/ operator.

Tested, approved and used by many of the UK and Europe's leading fleets. Galvanised sub-frame. Aluminium catwalk sections

Part Number: SAFECATREN

QuickFind Code: 13585



## 15. SUITABLE FOR RENAULT T RANGE



**DO NOT ENTER FROM THIS SIDE**



TreadSafe

### Key Specifications

By creating a new sub-frame which raises the catwalk to a level platform, we are able to create a large, safe, anti-slip working area behind the cab.

The platform is mounted in a way which is easy to remove for vehicle maintenance. Additional catwalk sizes are available upon request.

Additional safety decals are applied to provide blind spot warnings and safety notices to other bad road users and the driver/ operator.

Tested, approved and used by many of the UK and Europe's leading fleets. Galvanised sub-frame. Aluminium catwalk sections

**Part Number: SAFECATREN4X2**  
**QuickFind Code: 13899**



## 16. SUITABLE FOR RENAULT D RANGE (URBAN TRACTOR)



4x2

**Part Number: SAFECATREND**  
**QuickFind Code: 14244**

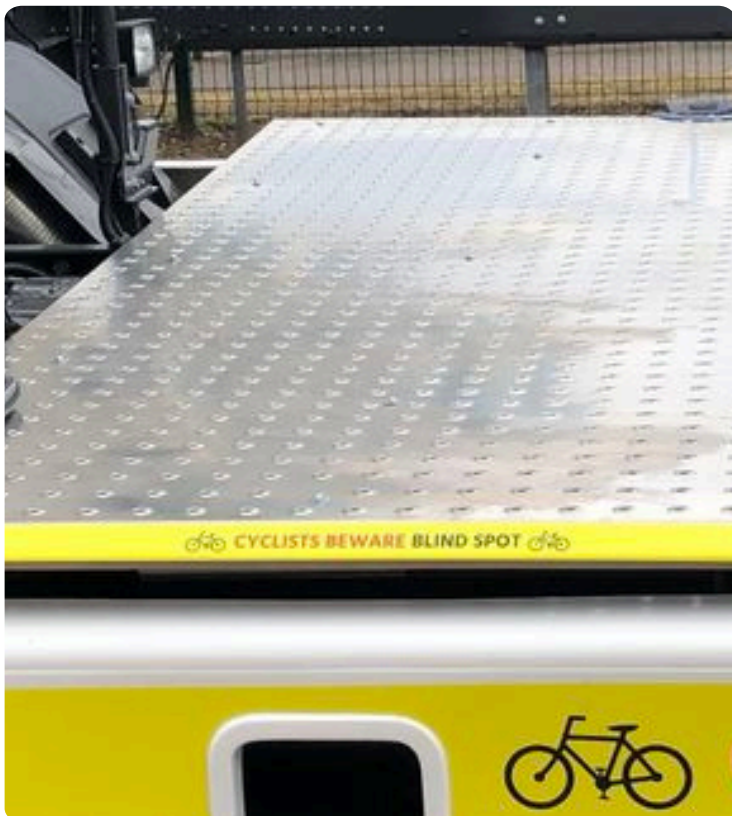
### Key Specifications

By creating a new sub-frame which raises the catwalk to a level platform, we are able to create a large, safe, anti-slip working area behind the cab.

The platform is mounted in a way which is easy to remove for vehicle maintenance. Additional catwalk sizes are available upon request.

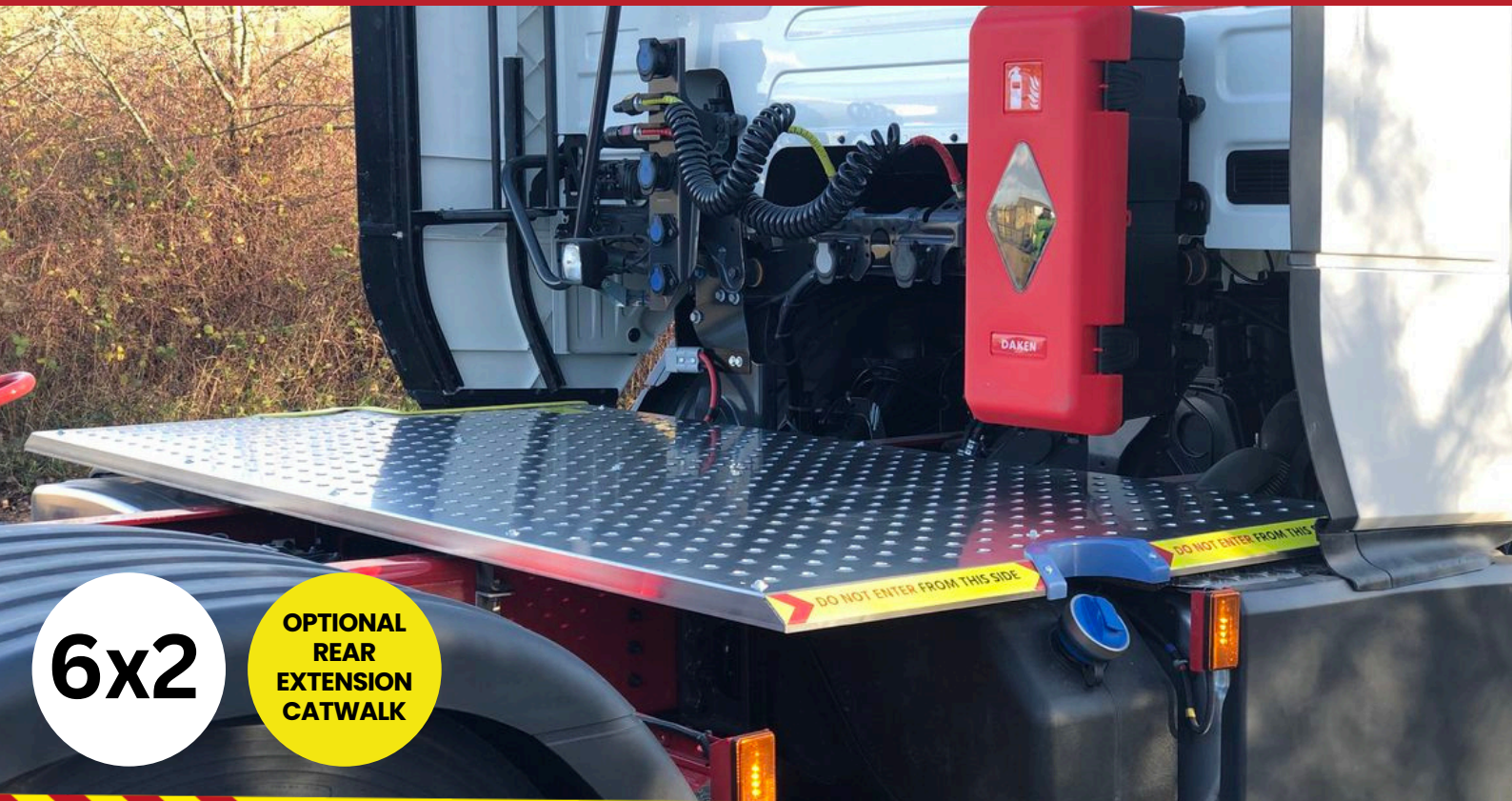
Additional safety decals are applied to provide blind spot warnings and safety notices to other bad road users and the driver/ operator.

Tested, approved and used by many of the UK and Europe's leading fleets. Galvanised sub-frame. Aluminium catwalk sections





## 17. SUITABLE FOR SCANIA NEXT GEN P, G, R, S



**DO NOT ENTER FROM THIS SIDE**



TreadSafe

### Key Specifications

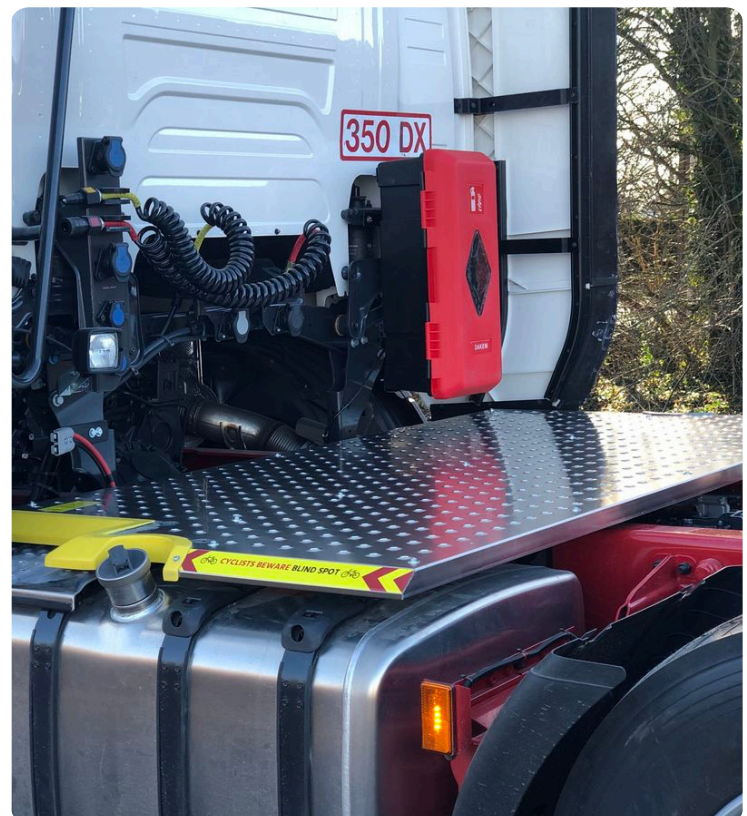
By creating a new sub-frame which raises the catwalk to a level platform, we are able to create a large, safe, anti-slip working area behind the cab.

The platform is mounted in a way which is easy to remove for vehicle maintenance. Additional catwalk sizes are available upon request.

Additional safety decals are applied to provide blind spot warnings and safety notices to other bad road users and the driver/ operator.

Tested, approved and used by many of the UK and Europe's leading fleets. Galvanised sub-frame. Aluminium catwalk sections

**Part Number: SAFECATSCAN**  
**QuickFind Code: 14170**



## Engineered To Your Requirements

TreadSafe understands that for certain, specialised contracts and operations, sometimes a slightly different size or shape of platform may be required. Perhaps it needs to avoid some specific chassis mounted equipment, or have an additional filler cap cut out for a long range fuel tank. Or, perhaps we just don't offer the chassis you have...

Whatever your requirements, our UK based engineers are able to design to your specification, and produce test patterns and fitments prior to any production run.

Talk to your local TreadSafe distributor for further information on how we can meet your specification.



## Chassis In-Fills Also Available

Sometimes, there is no need to install a full width chassis catwalk. In some cases, a small, additional in-fill panel will suffice coupled with the factory fitted catwalk pieces. Our chassis in-fill panels are manufactured from the same high quality aluminium as our full catwalks, have the same super safe reverse punch tread, and are simple to install.

Product shown to the right is a chassis in-fill for the **Mercedes Actros 4 6x2 chassis**.

Also available from stock are:

**MAN TG3 TGX & TGS- 6x2**

**MAN TG3 TGX & TGS- 4x2**

**MAN TGX Euro 6- 6x2**

**Iveco S-Way- 6x2**

**Mercedes Actros 4/5- 6x2**

**Mercedes Actros 4/5- 4x2**

**DAF XF/XG- 6x2**



## Custom Branded Safety Decals

We love our TreadSafe logo, but for larger production runs, we can offer custom branded safety decals for your vehicles! Company logos, customised safety messages and more.

MOQ's apply, please speak with your TreadSafe distributor for further information.

YourLogo

# TreadSafe

Safety Platform

The logo for TreadSafe features the word "Tread" in black, "Safe" in red, and "Safety Platform" in a smaller black font below "Safe". A graphic of a tire tread is positioned behind the text, with a red checkmark inside a white circle overlaid on the tire.

Distributed By



 **MADE IN BRITAIN**